

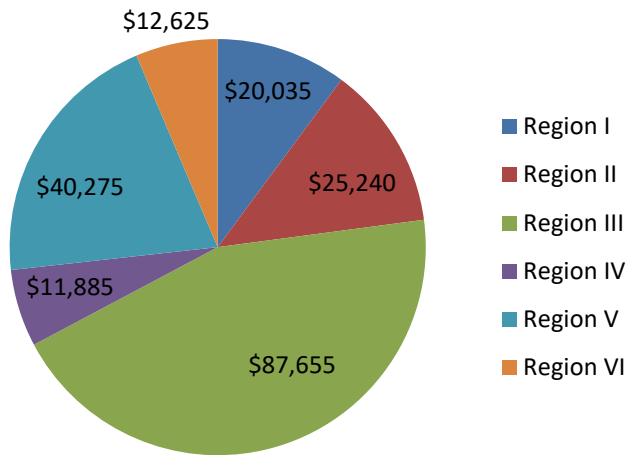
Kansas Board of Emergency Medical Services

Education Incentive Grant Program

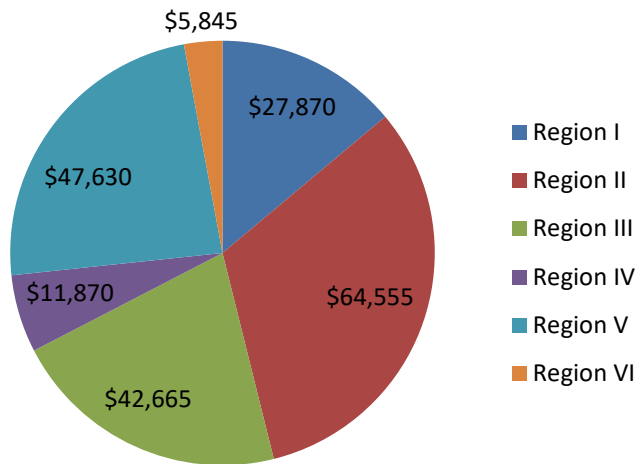
The 2004 Legislature granted the Board funds to establish an education incentive program for emergency medical attendants for FY2005 for the purpose of implementing a grant program for emergency medical services training and educational assistance for persons in underserved areas: Provided, That when issuing such grants, first priority shall be given to ambulance services submitting applications seeking grants to pay the cost of recruiting volunteers and cost of the initial courses of training for attendants, instructor-coordinators and training officers: Provided further, That the second priority shall be given to ambulance services submitting applications seeking grants to pay the cost of continuing education for attendants, instructor-coordinators and training officers: And provided further, That the third priority shall be given to ambulance services submitting applications seeking grants to pay the cost of education for attendants, instructor-coordinators and training officers who are obtaining a post-secondary education degree.

Education Incentive Grant Monies Distribution

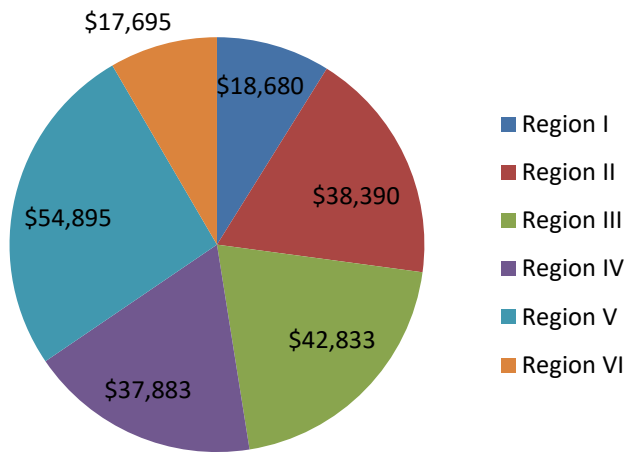
FY 2005 Dollars Distributed



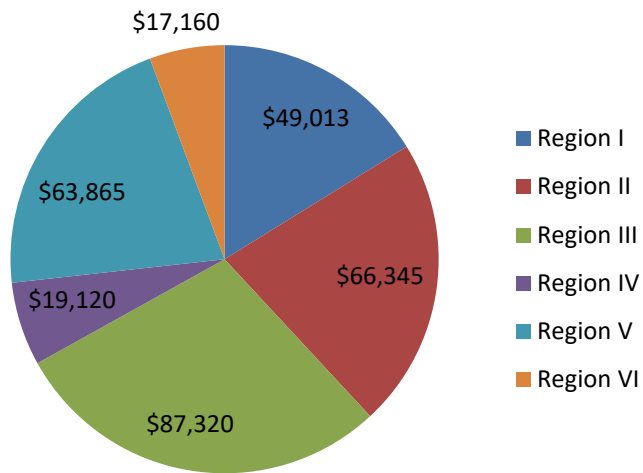
FY 2006 Dollars Distributed



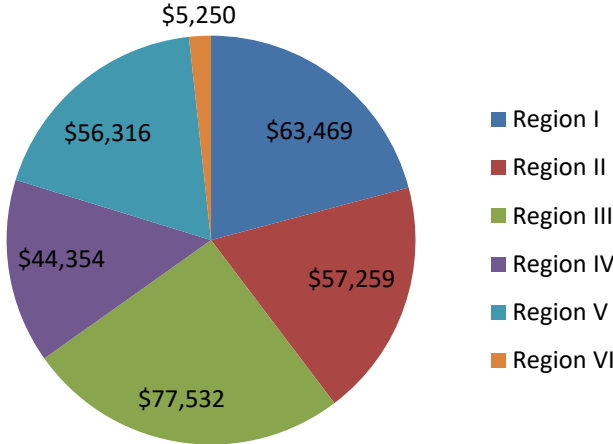
FY 2007 Dollars Distributed



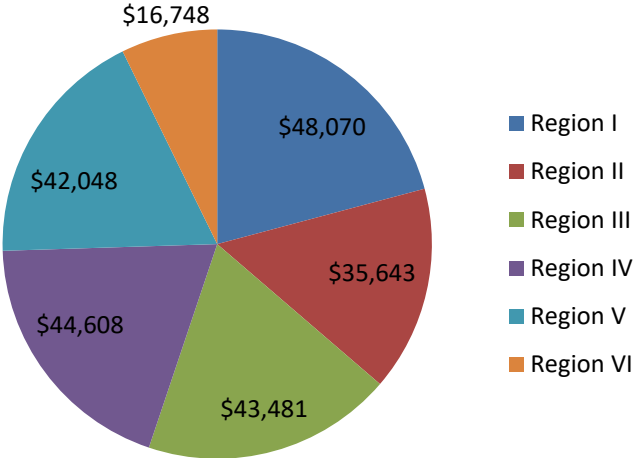
FY 2008 Dollars Distributed



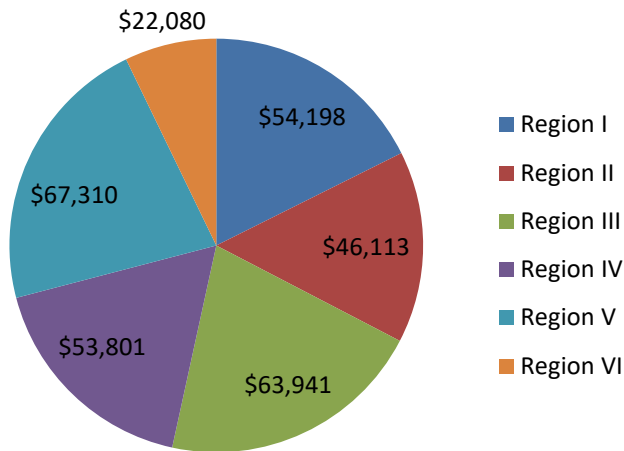
FY 2009 Dollars Distributed



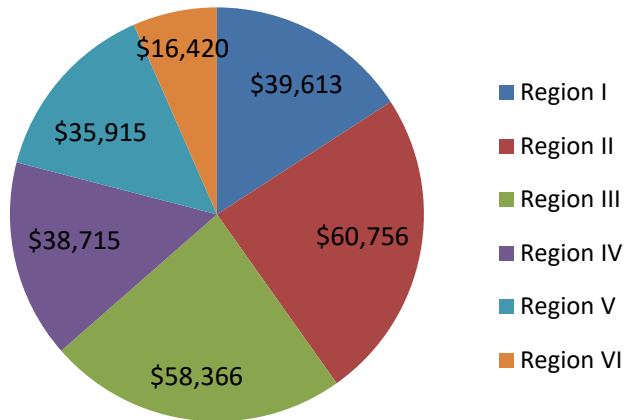
FY 2010 Dollars Distributed



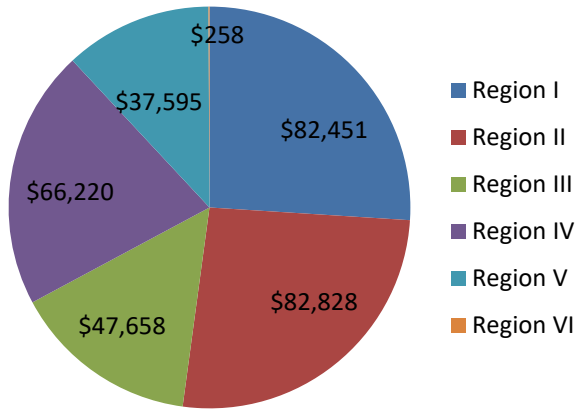
FY 2011 Dollars Distributed



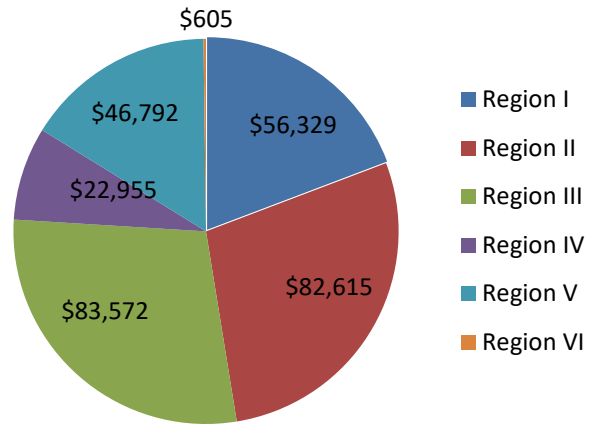
FY 2012 Dollars Distributed



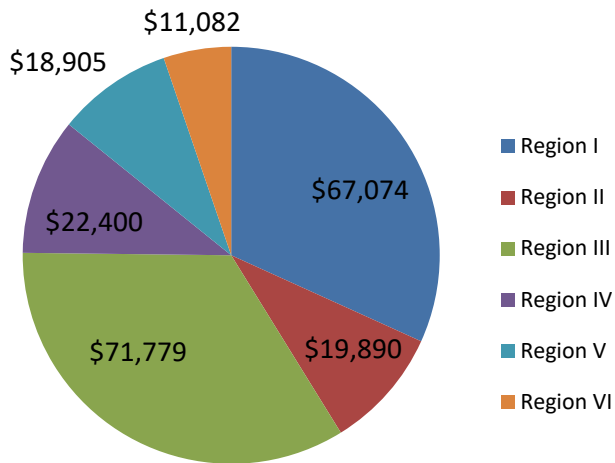
FY 2013 Dollars Distributed



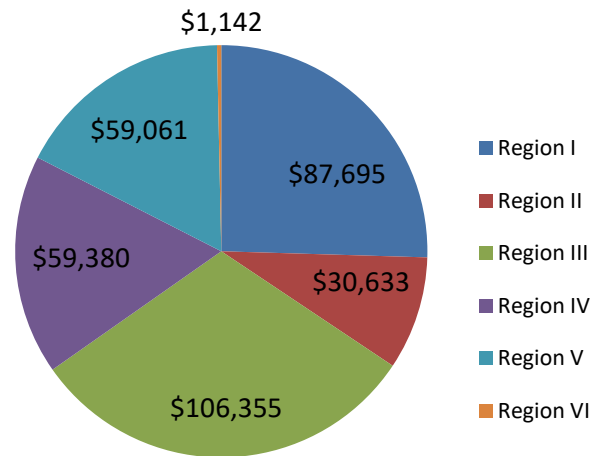
FY 2014 Dollars Distributed



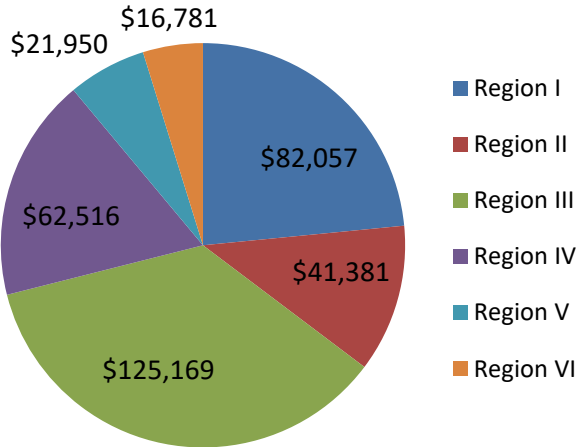
FY 2015 Dollars Distributed



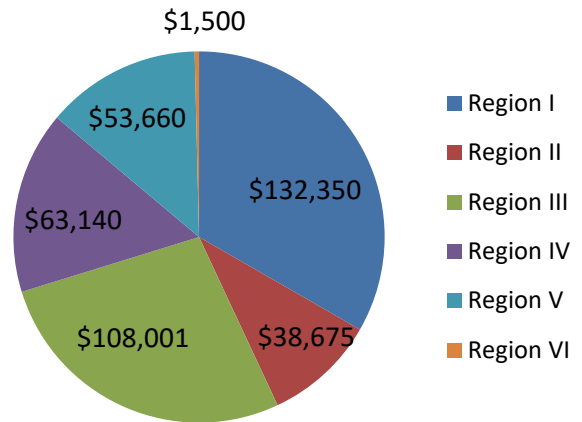
FY 2016 Dollars Distributed



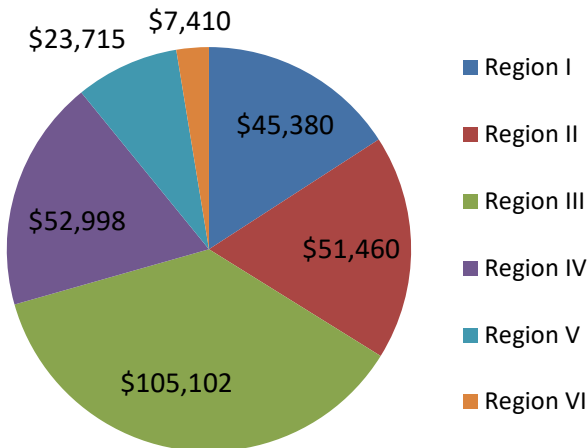
FY 2017 Dollars Distributed



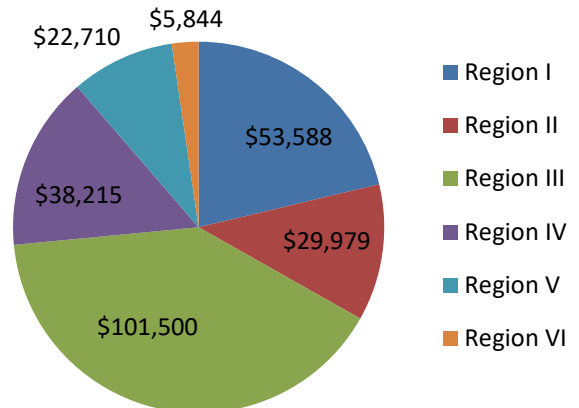
FY 2018 Dollars Distributed



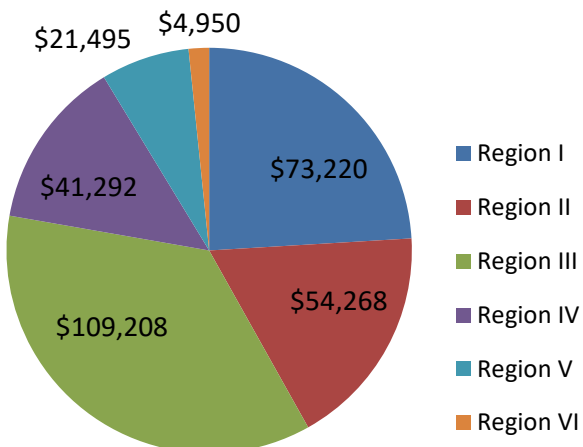
FY 2019 Dollars Distributed



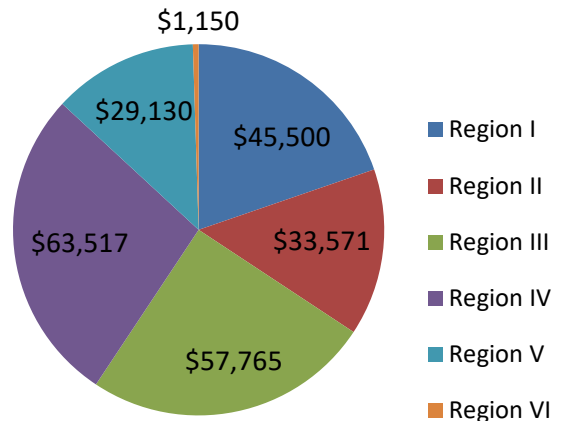
FY 2020 Dollars Distributed



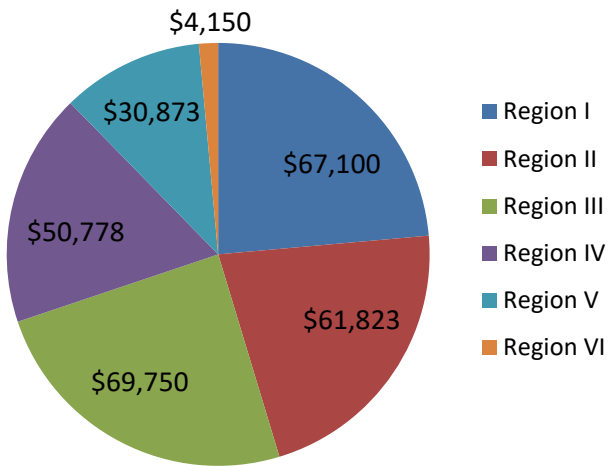
FY 2021 Dollars Distributed



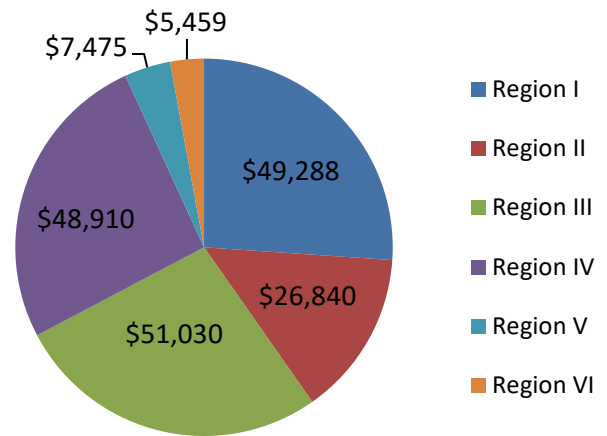
FY 2022 Dollars Distributed



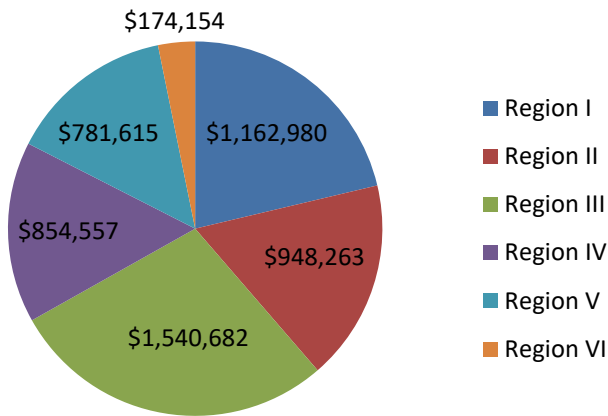
FY 2023 Dollars Distributed



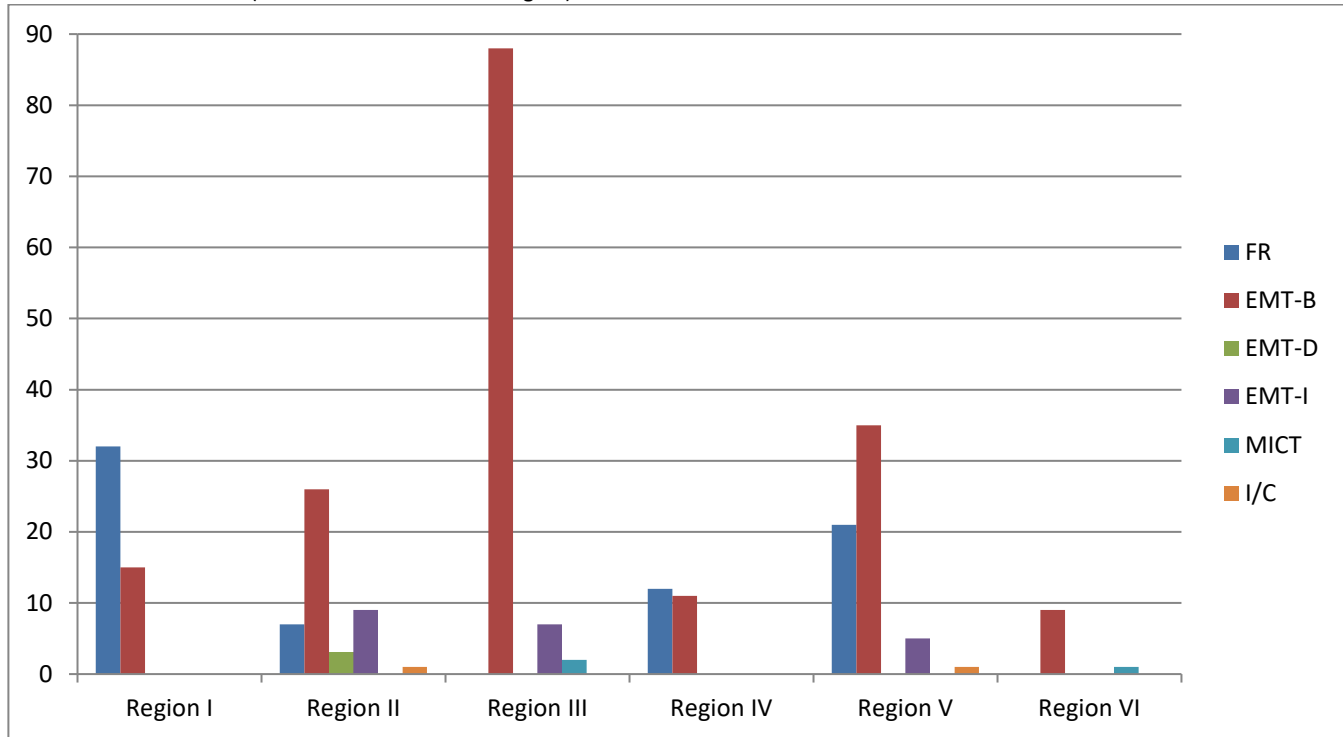
FY 2024 Dollars Distributed



Total Dollars Distributed by Region (FY05-FY24)



FY2005 Distribution (Number of Students Per Region)



Region I

Ellis 22 FR
 Norton 10 FR
 Phillips 62 Cont Ed hrs
 Rooks 6 EMT-B
 Rush 9 EMT-B

Pawnee 7 EMT-B
 Pratt 3 EMT-B, 3 EMT-I
 Sedgwick 5 EMT-B, 1 MICT

Region II

Grant 14 EMT-B, 4 EMT-I
 Greeley 3 EMT-B, 3 EMT-D, 2 EMT-I, 1 I/C,
 40 Cont Ed hrs
 Haskell 7 FR
 Kearney 2 EMT-B
 Wichita 7 EMT-B, 3 EMT-I

Region IV

Jewell 7 FR
 Lincoln 5 FR
 Osborne 9 EMT-B
 Ottawa 2 EMT-B

Region V

Anderson 4 EMT-B
 Atchison 3 FR
 Brown 3 EMT-B, 30 Cont Ed hrs
 Chase 7 EMT-B
 Doniphan 3 FR, 1 I/C, 296 Cont Ed hrs
 Jackson 6 EMT-B, 5 EMT-I, 50 CE
 Nemaha 13 EMT-B
 Wabaunsee 14 FR
 Washington 1 EMT-B

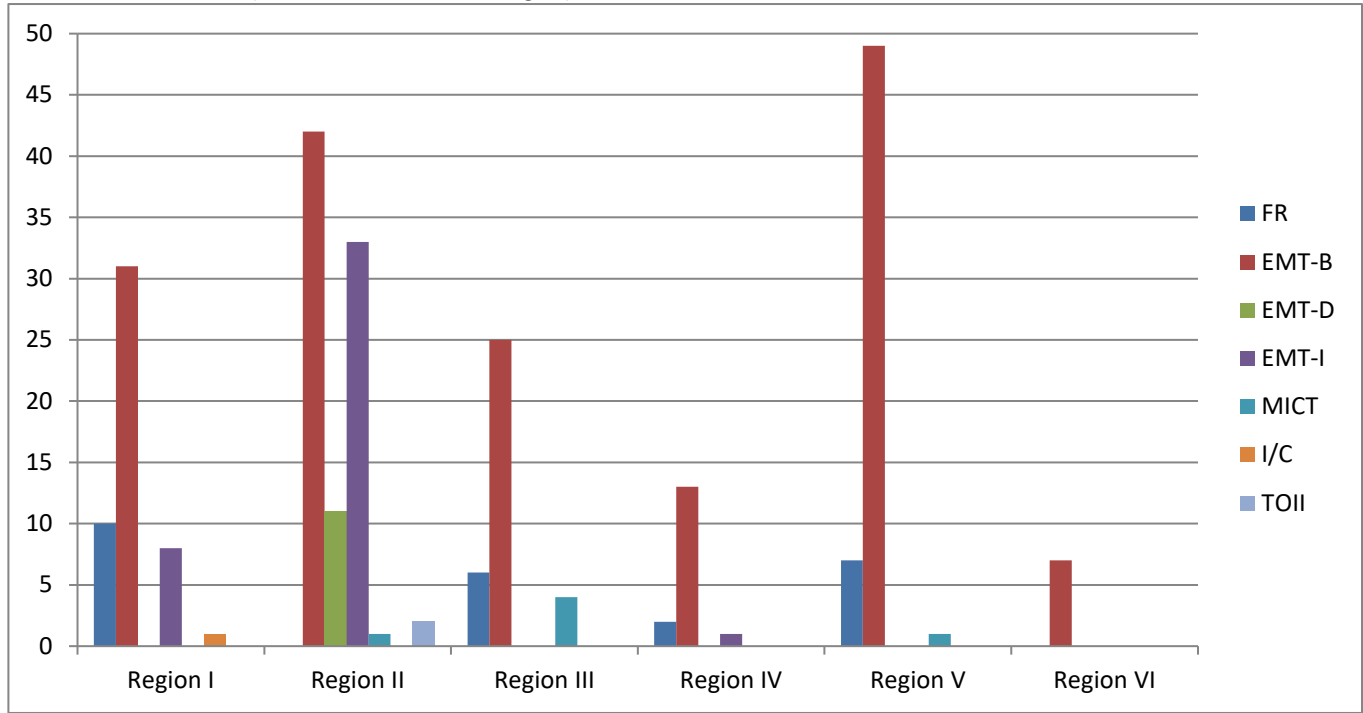
Region III

Barber 23 EMT-B
 Barton 4 EMT-B
 Butler 5 EMT-B, 4 EMT-I, 1 MICT
 Cowley 12 EMT-B
 Edwards 6 EMT-B
 Harvey 3 EMT-B
 Kiowa 3 EMT-B
 Marion 11 EMT-B
 McPherson 6 EMT-B

Region VI

Greenwood 8 EMT-B, 1 MICT
 Neosho 1 EMT-B

FY2006 Distribution (Number of Students Per Region)



Region I

Cheyenne 8 EMT-B
 Ellis 1 I/C
 Logan 5 EMT-B
 Norton 10 FR, 6 EMT-B, 1 EMT-I
 Phillips 7 EMT-I
 Rooks 1 EMT-B
 Sheridan 3 EMT-B
 Trego 8 EMT-B, 24 Cont Ed hrs

Region II

Clark 9 EMT-I
 Finney 3 EMT-D
 Grant 19 EMT-B, 2 TOII
 Greeley 1 EMT-D
 Lane 7 EMT-B
 Meade 7 EMT-B
 Morton 9 EMT-B, 1 MICT
 Stevens 24 EMT-I
 Wichita 7 EMT-D

Region III

Barton 5 EMT-B
 Butler 2 EMT-B
 Harvey 6 FR
 McPherson 1 MICT

Pawnee 13 EMT-B
 Pratt 1 MICT
 Rice 1 EMT-B
 Sedgwick 4 EMT-B, 2 MICT

Region IV

Clay 4 EMT-B
 Cloud 4 EMT-B
 Ellsworth 2 EMT-B
 Osborne 1 EMT-I
 Ottawa 2 EMT-B
 Saline 1 EMT-B
 Smith 2 FR

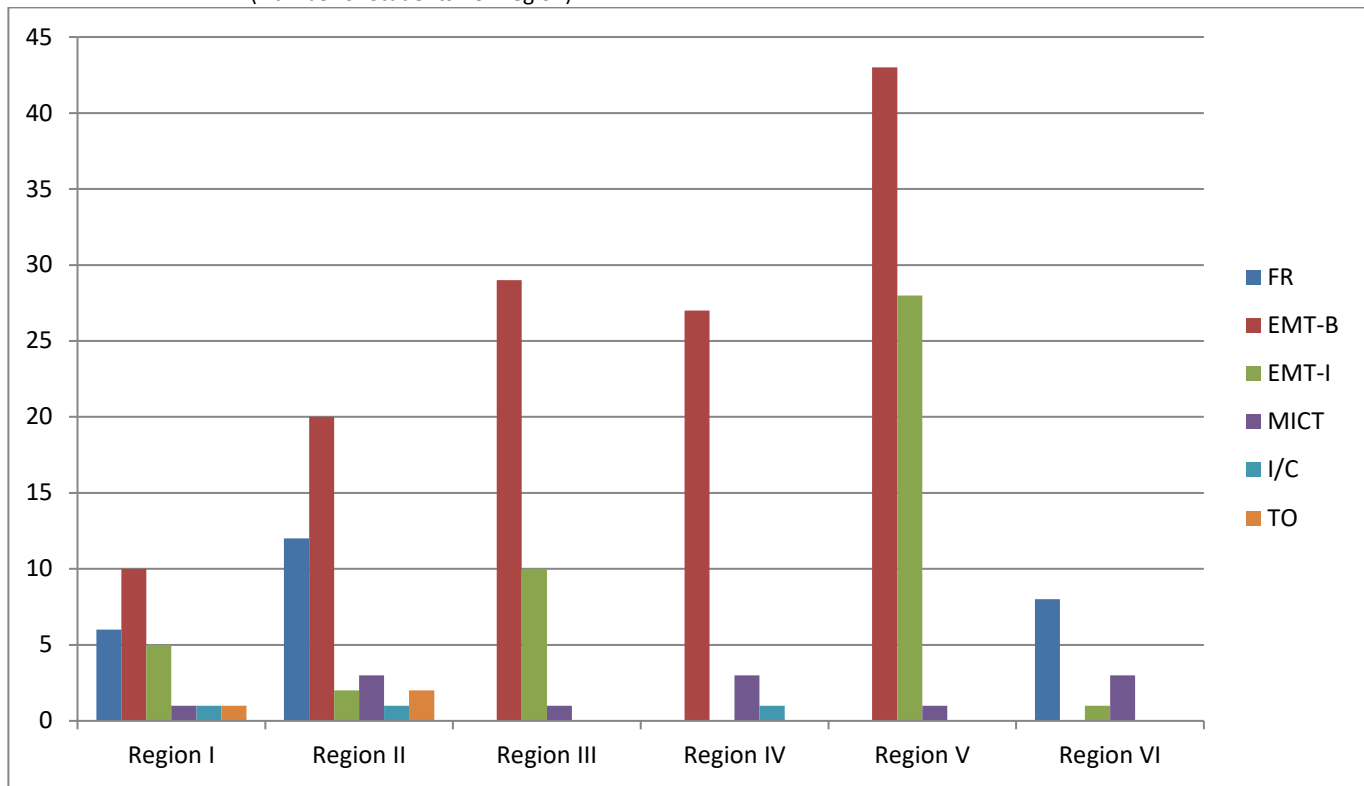
Region V

Franklin 16 EMT-B
 Jackson 6 EMT-B
 Marshall 7 FR, 4 EMT-B
 Morris 6 EMT-B
 Nemaha 15 EMT-B, 6 Cont Ed hrs
 Washington 2 EMT-B, 1 MICT

Region VI

Allen 2 EMT-B
 Chautauqua 5 EMT-B

FY2007 Distribution (Number of Students Per Region)



Region I

Ellis 6 FR
 Phillips 1 I/C
 Rooks 1 EMT-B, 3 EMT-I, 1 MICT, 1 TO
 Rush 2 EMT-I, Cont Ed hrs
 Russell 2 EMT-B
 Thomas 5 EMT-B
 Wallace 2 EMT-B

Stafford 1 EMT-B
 Sumner 6 EMT-B, Cont Ed hrs

Region IV

Clay 2 EMT-B
 Ellsworth 5 EMT-B
 Jewell 2 MICT
 Lincoln 17 EMT-B, 1 I/C
 Republic 1 EMT-B
 Smith 2 EMT-B, 1 MICT

Region II

Clark 7 FR, 1 MICT, Cont Ed hrs
 Finney 8 EMT-B
 Grant 2 TO, Cont Ed hrs
 Greeley 7 EMT-B
 Lane 5 EMT-B, 1 MICT, 1 I/C
 Meade 5 FR, 1 MICT, Cont Ed hrs

Region V

Atchison 13 EMT-B, 13 EMT-I
 Brown 4 EMT-B
 Jackson 2 EMT-B, 1 EMT-I
 Jefferson 9 EMT-I
 Marshall 1 EMT-B
 Nemaha 5 EMT-I
 Shawnee 18 EMT-B
 Washington 5 EMT-B, 1 MICT

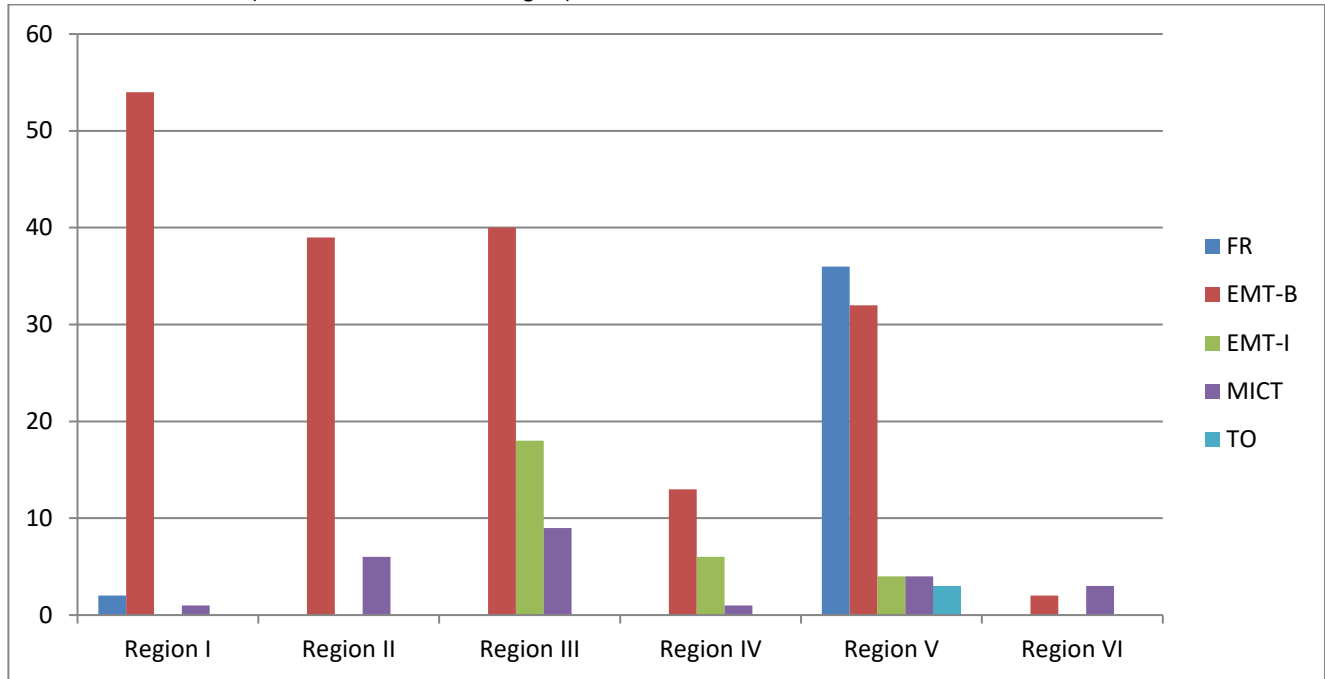
Region III

Barton 2 EMT-B, 4 EMT-I
 Butler 1 EMT-B
 Harper 6 EMT-I
 Harvey 1 MICT
 Kingman 7 EMT-B
 Marion 8 EMT-B
 Pawnee 3 EMT-B
 Sedgwick 1 EMT-B, 2 MICT

Region VI

Allen 8 FR, 1 EMT-I
 Chautauqua 1 MICT
 Elk 1 MICT
 Montgomery 1 MICT

FY2008 Distribution (Number of Students Per Region)



Region I

Gove 17 EMT-B
 Norton 7 EMT-B, 1 MICT
 Phillips 11 EMT-B
 Rooks 6 EMT-B
 Thomas 2 FR
 Trego 1 EMT-B
 Wallace 12 EMT-B

Sumner

8 EMT-B, 2 MICT

Region IV

Cloud 1 MICT
 Ellsworth 10 EMT-B, 6 EMT-I, Cont Ed hrs
 Ottawa 3 EMT-B

Region V

Atchison 7 EMT-B, 1 MICT
 Brown 5 FR
 Chase 3 FR
 Doniphan 7 EMT-B
 Franklin 17 FR, 3 TO
 Jackson 3 EMT-B, 3 EMT-I, 1 MICT
 Jefferson 10 FR, 1 EMT-B, 1 MICT
 Lyon 1 EMT-B
 Morris 9 EMT-B
 Nemaha 1 FR
 Shawnee 1 MICT
 Washington 4 EMT-B, 1 EMT-I

Region II

Finney 10 EMT-B, 2 MICT
 Ford 1 EMT-B
 Grant 15 EMT-B, 2 MICT
 Gray 1 MICT
 Greeley 3 EMT-B
 Morton 1 MICT
 Wichita 10 EMT-B

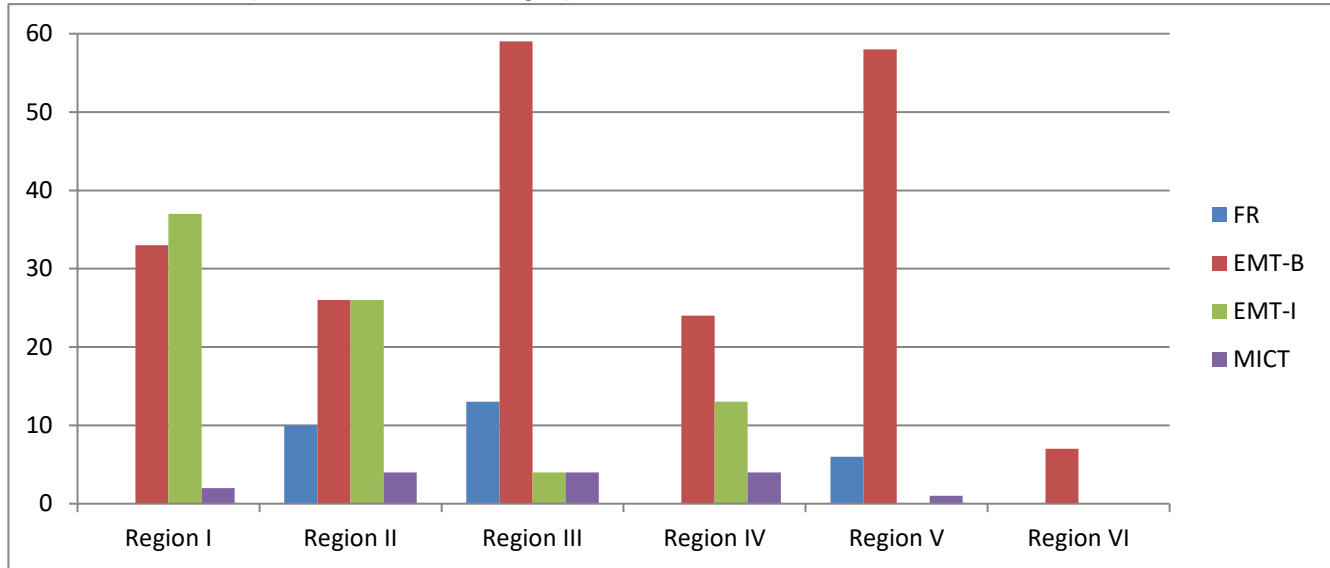
Region VI

Elk 1 MICT
 Greenwood 2 EMT-B, 2 MICT

Region III

Barber 8 EMT-B
 Edwards 1 EMT-B, 1 EMT-I, 1 MICT
 Harper 2 MICT
 Harvey 1 EMT-B, 1 MICT
 Marion 6 EMT-B
 McPherson 3 EMT-B
 Pawnee 2 EMT-B, 10 EMT-I
 Pratt 1 EMT-B
 Reno 1 EMT-B, 4 EMT-I
 Sedgwick 3 EMT-B, 1 MICT
 Stafford 6 EMT-B, 3 EMT-I, 2 MICT

FY2009 Distribution (Number of Students Per Region)



Region I

Cheyenne 5 EMT-I
 Gove Cont Ed hrs
 Graham 8 EMT-B
 Logan 8 EMT-B
 Ness 1 EMT-B
 Norton 2 EMT-I, Cont Ed hrs
 Phillips 7 EMT-I
 Rawlins 6 EMT-B, 4 EMT-I
 Rooks 1 EMT-I
 Russell 1 MICT
 Sheridan Cont Ed hrs
 Sherman 7 EMT-I, 1 MICT, Cont Ed hrs
 Thomas 8 EMT-B
 Trego 2 EMT-B
 Wallace 11 EMT-I

Kingman 7 EMT-B
 Kiowa 8 FR
 Marion 11 EMT-B
 McPherson 6 EMT-B, 1 EMT-I
 Pawnee 1 EMT-I, 1 MICT
 Pratt 3 EMT-B
 Reno 3 EMT-B
 Stafford 10 EMT-B

Region IV

Clay 1 EMT-B, 2 EMT-I
 Cloud 1 MICT
 Ellsworth 7 EMT-B, 2 MICT
 Lincoln 8 EMT-B, 7 EMT-I, 1 MICT
 Mitchell 7 EMT-B
 Ottawa 1 EMT-B, 4 EMT-I

Region II

Clark 7 FR, 7 EMT-B
 Finney 3 EMT-B, 1 MICT
 Ford 1 EMT-B
 Grant 5 EMT-I
 Greeley 2 EMT-I
 Haskell 8 EMT-I
 Lane 3 FR, 3 EMT-B
 Meade 8 EMT-B
 Morton 6 EMT-I
 Seward 4 EMT-B, 3 MICT
 Wichita 5 EMT-I

Region V

Anderson 10 EMT-B
 Brown 14 EMT-B
 Chase 6 FR
 Jackson 6 EMT-B
 Jefferson 2 EMT-B
 Marshall 5 EMT-B
 Morris 4 EMT-B
 Nemaha 10 EMT-B, 1 MICT
 Washington 7 EMT-B

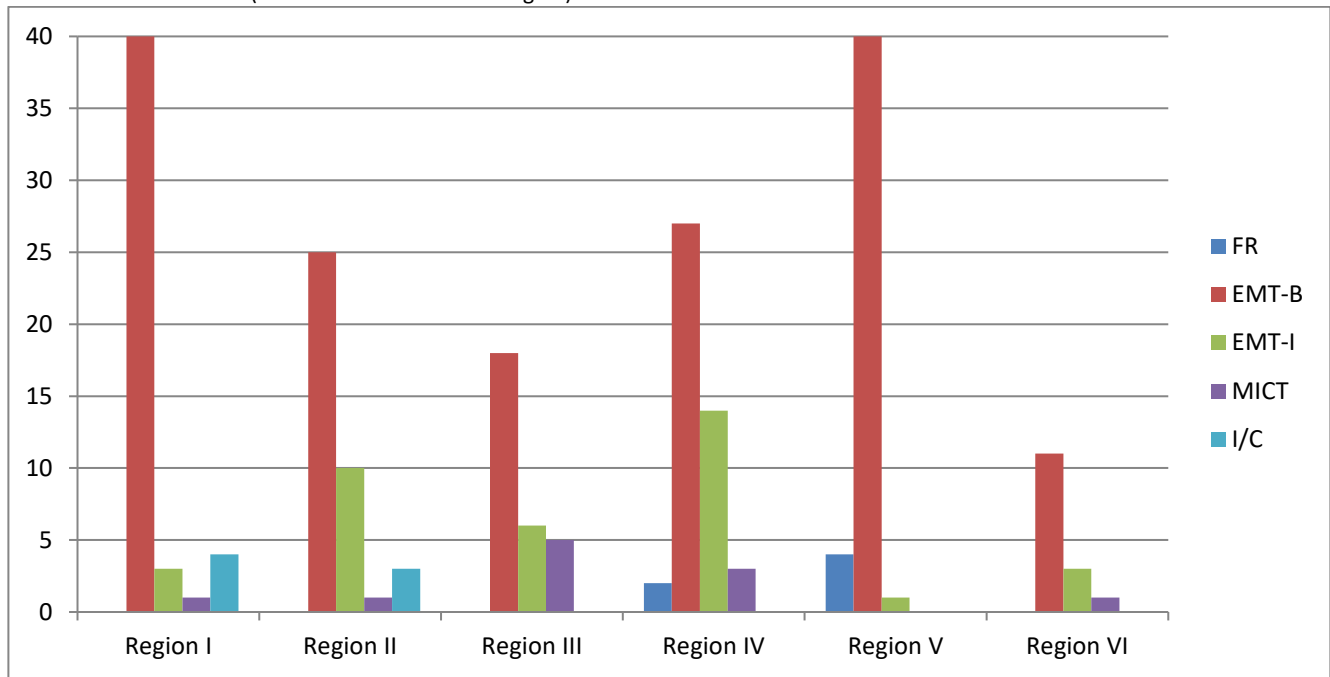
Region III

Barton 3 EMT-B
 Edwards 1 EMT-B, 1 MICT
 Harper 15 EMT-B, 1 MICT
 Harvey 5 FR, 2 EMT-I, 1 MICT

Region VI

Elk 2 EMT-B
 Greenwood 5 EMT-B

FY2010 Distribution (Number of Students Per Region)



Region I

Cheyenne 5 EMT-B
 Logan Cont Ed hrs
 Ness 1 EMT-B
 Norton 2 EMT-B, 1 EMT-I
 Phillips 12 EMT-B
 Rawlins 1 EMT-B, 1 MICT, 1 I/C
 Rooks 1 EMT-B, 2 I/C
 Russell 4 EMT-B, 2 EMT-I, Cont Ed hrs
 Sheridan 4 EMT-B, 1 I/C
 Thomas 10 EMT-B
 Wallace Cont Ed hrs

Region II

Clark 5 EMT-I
 Finney 1 EMT-B
 Ford 1 I/C
 Hamilton 1 I/C
 Haskell 1 MICT, 1 I/C
 Meade 8 EMT-B, 5 EMT-I
 Morton 15 EMT-B
 Stevens 1 EMT-B

Region III

Edwards 1 EMT-B, 2 MICT
 Harvey 2 EMT-I, 1 MICT
 Kingman 2 EMT-I
 Kiowa 2 MICT, Cont Ed hrs
 Marion 12 EMT-B
 Pawnee 4 EMT-B
 Stafford 2 EMT-I
 Sumner 1 EMT-B

Region IV

Clay 2 EMT-B, 2 EMT-I, 2 MICT
 Ellsworth 7 EMT-B, 4 EMT-I
 Jewell 1 EMT-I
 Lincoln 2 FR, 2 EMT-I
 Mitchell 13 EMT-B, 4 EMT-I
 Ottawa 5 EMT-B, 1 EMT-I, 1 MICT, Cont Ed hrs

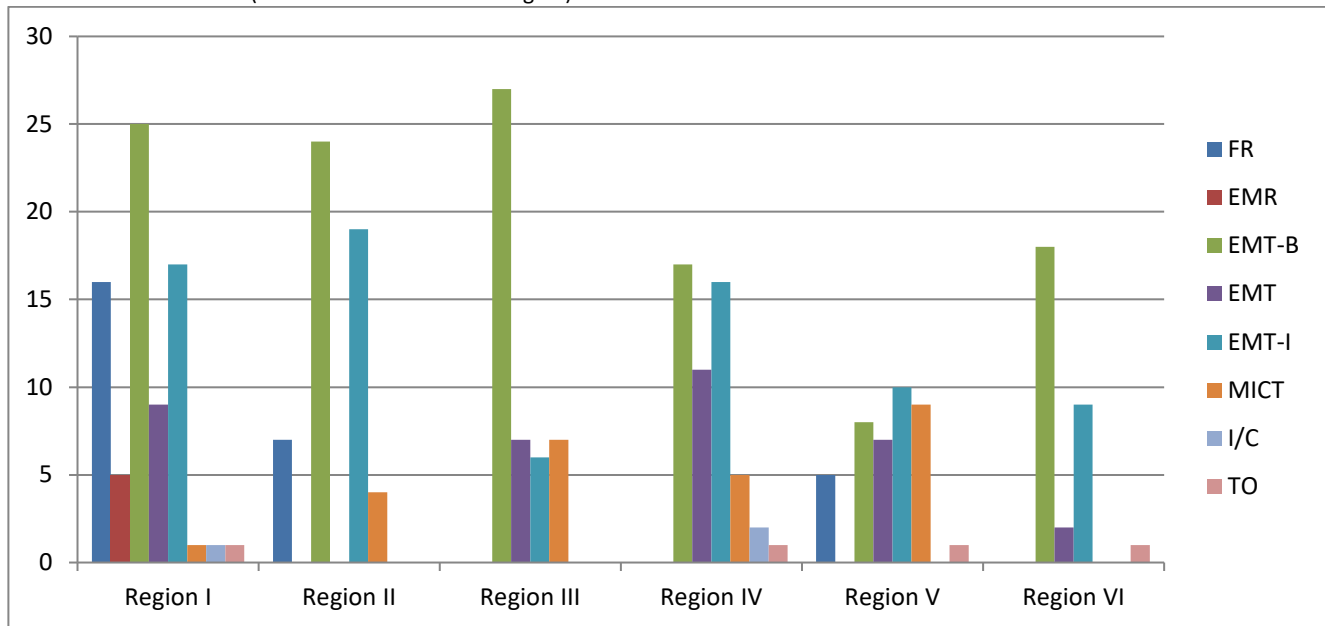
Region V

Anderson 3 EMT-B
 Chase 2 FR, 3 EMT-B
 Doniphan 2 FR, 10 EMT-B
 Jackson 3 EMT-B
 Jefferson 1 EMT-B
 Marshall 2 EMT-B
 Nemaha 4 EMT-B, 7 EMT-I
 Shawnee/
 Wabaunsee 6 EMT-B
 Washington 8 EMT-B

Region VI

Allen 7 EMT-B
 Elk 1 EMT-B, 1 MICT
 Greenwood 3 EMT-I
 Wilson 3 EMT-B

FY2011 Distribution (Number of Students Per Region)



Region I

Cheyenne 1 EMT-B
 Decatur 5 EMR
 Logan 9 EMT-B
 Ness 16 FR
 Phillips 5 EMT, 10 EMT-I, 1 I/C
 Rawlins 3 EMT-B
 Rooks 12 EMT-B, 5 EMT Transition
 Sheridan 3 EMR Transition, 12 EMT Transition
 Sherman 5 EMT-I
 Thomas 1 MICT, 1 TO
 Trego 4 EMT, 2 EMT-I

Pawnee
 Stafford
 Sumner

2 EMT, 2 EMT-I, Cont Ed hrs
 5 EMT, 2 MICT
 1 MICT

Region IV

Clay
 Cloud
 Edwards
 Ellsworth
 Jewell
 Lincoln
 Mitchell
 Osborne
 Ottawa
 Republic
 Smith

2 EMT-I, 1 MICT
 11 EMT-B, 1 EMT-I, 1 MICT
 4 EMT
 1 EMT-B, 3 EMT-I, 1 I/C, 1 TOII
 2 EMT
 1 MICT
 2 MICT
 1 EMT-B, 3 EMT
 7 EMT-I, 1 I/C
 2 EMT
 4 EMT-B, 3 EMT-I

Region II

Finney 1 EMT-B, 3 EMT-I
 Grant 1 MICT
 Gray 13 EMT-B
 Hamilton 3 EMT-B, 7 EMT-I
 Haskell 7 FR, 1 MICT
 Hodgeman 2 EMT-I
 Kearny 4 EMT-I
 Lane 7 EMT-B, 1 EMT-I
 Seward 2 EMT-I, 2 MICT
 Wichita 4 EMT Transition, Cont Ed hrs

Region V

Atchison
 Brown
 Chase
 Coffey
 Jackson
 Marshall
 Nemaha

5 FR
 5 EMT-B, 3 EMT-I
 1 T/O
 1 MICT
 2 EMT, 2 EMT-I, 5 MICT
 3 EMT-I
 3 EMT-B, 5 EMT, 2 EMT-I, 3 MICT

Region III

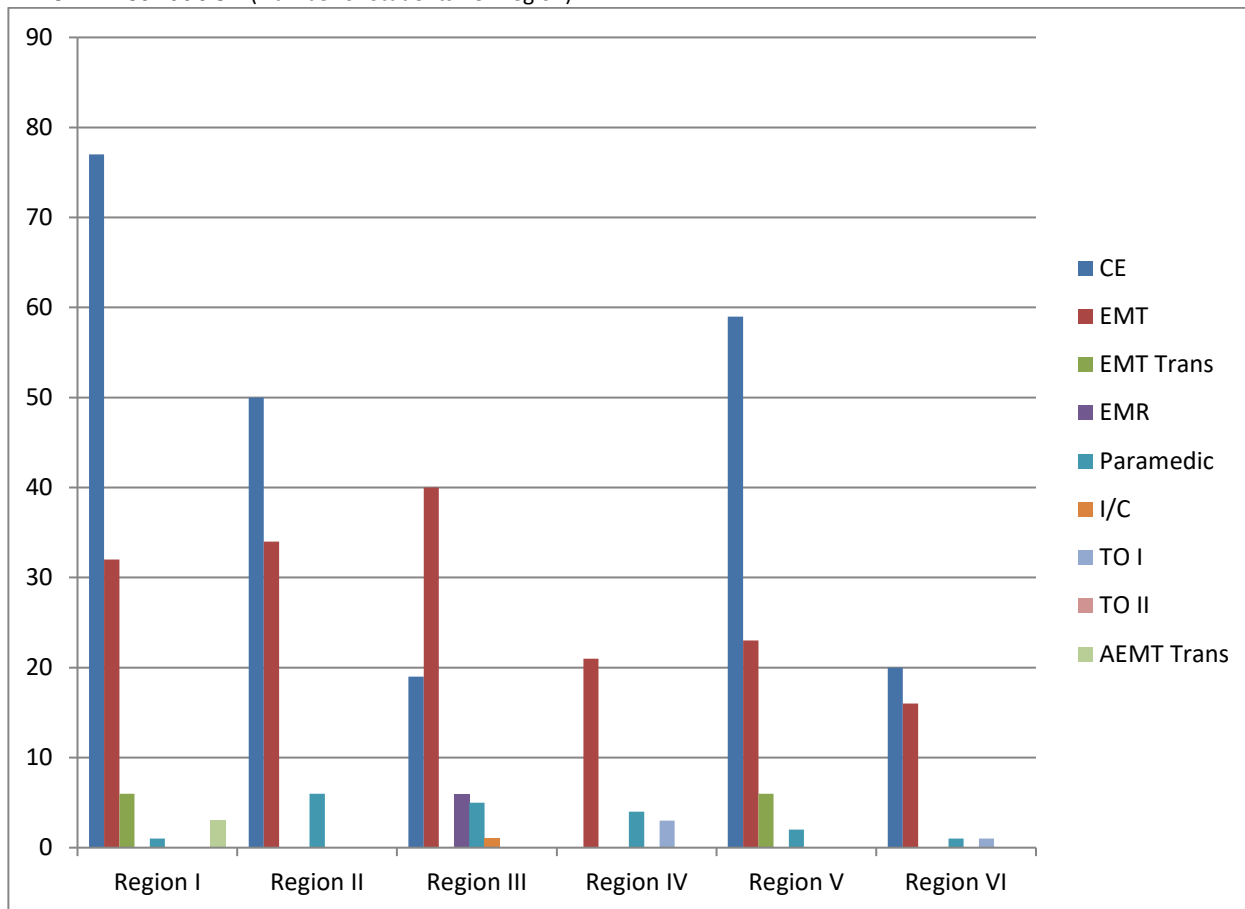
Barber 7 EMT-B
 Barton 1 EMT-B, 1 EMT-I
 Comanche 1 EMT-B
 Harper 1 MICT
 Kingman 6 EMT-B
 Kiowa 4 EMT-B, 3 EMT-I
 Marion 7 EMT-B, 2 MICT
 McPherson 1 EMT-B, 1 MICT

Region VI

Allen
 Chautauqua
 Cherokee
 Greenwood
 Neosho
 Wilson

3 EMT-I, 1 TO
 12 EMT-B
 1 EMT-I
 6 EMT-B
 4 EMT-I
 2 EMT, 1 EMT-I

FY2012 Distribution (Number of Students Per Region)



Region I

Cheyenne	5 EMT	Reno	3 EMT
Gove	7 EMT, 6 EMT Trans	Rice	1 EMT
Ness	1 EMT	Stafford	9 EMT
Norton	13 EMT	Sumner	2 EMT, 2 EMT-I, 1 Paramedic
Phillips	49 CE		
Rooks	13 CE, 4 EMT-B		
Sheridan	3 AEMT Trans		
Thomas	2 EMT, 1 Paramedic		
Trego	15 CE		

Region IV

Clay	1 Paramedic
Cloud	7 EMT, 1 Paramedic
Ellsworth	1 Paramedic
Lincoln	6 EMT
Osborne	3 EMT, 3 TO I
Ottawa	1 EMT, 4 EMT-I, 1 Paramedic

Region II

Clark	7 EMT-I
Comanche	1 EMT-I
Finney	1 EMT-I
Ford	10 EMT, 1 EMT-I
Grant	29 CE, 2 Paramedic
Greeley	3 EMT
Haskell	7 CE, 7 EMT
Lane	2 Paramedic
Morton	2 Paramedic
Wichita	4 EMT, 14 CE

Region V

Brown	14 CE, 2 EMT, 2 EMT Trans
Chase	2 CE
Doniphan	2 EMT
Jackson	2 EMT, 2 EMT-I, 2 Paramedic
Marshall	6 CE, 5 EMT, 1 EMT-I
Nemaha	37 CE, 5 EMT, 4 EMT Trans, 3 EMT-I
Washington	1 EMT

Region III

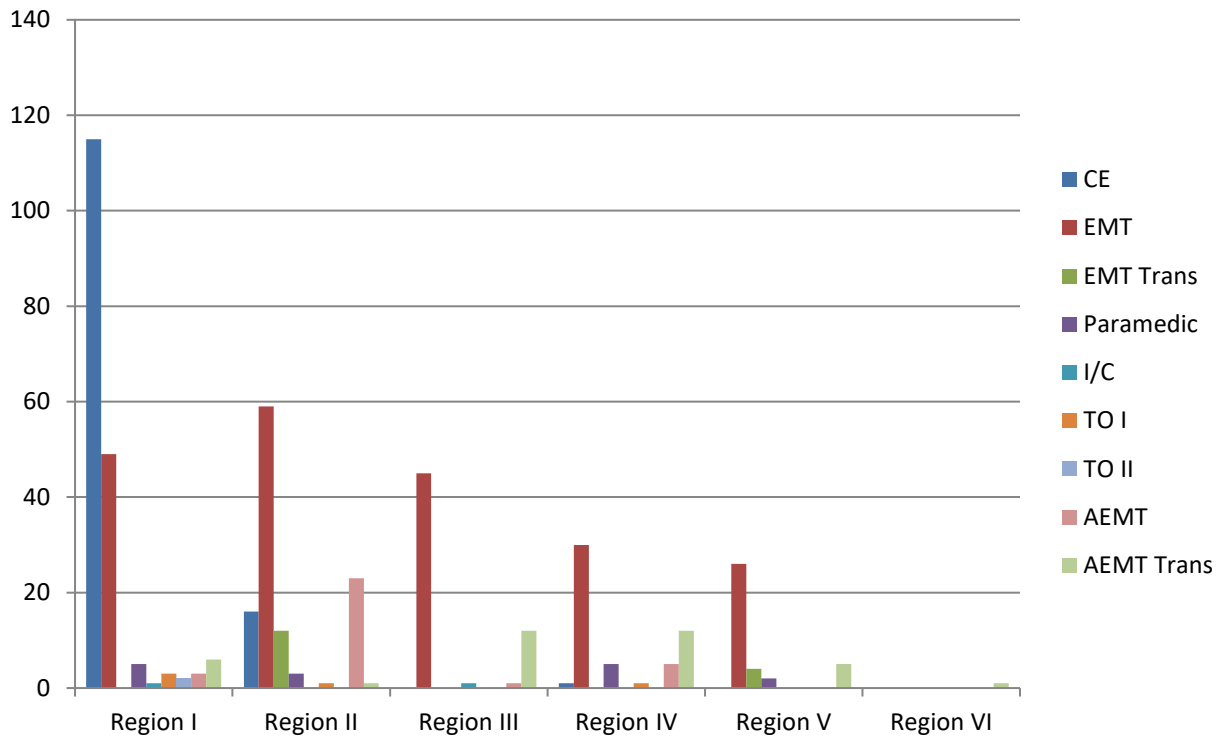
Barton	7 EMT, 1 I/C, 2 Paramedic
Edwards	1 Paramedic
Harper	1 EMT-I
Kingman	5 EMT
Kiowa	3 EMT
Marion	6 EMR, 7 EMT
McPherson	19 CE, 1 Paramedic

Region VI

Allen	2 EMT, 1 TO-I
Chautauqua	1 Paramedic
Cherokee	20 CE, 5 EMT-I
Elk	1 EMT
Greenwood	8 EMT

FY2013 Distribution (Number of Students Per Region)

FY 2013 Distribution (Number of Students per Region)



Region I

Cheyenne 3 CE
 Decatur 2 EMT
 Graham 1 Paramedic
 Logan 4 EMT
 Norton 4 EMT
 Phillips 112 CE, 1 I/C, 2 Paramedic, 2 TO II, 9 EMT
 Rawlins 2 AEMT, 4 EMT
 Stockton 1 EMT
 Rush 3 EMT
 Russell 1 AEMT, 2 EMT, 2 Paramedic
 Sherman 6 AEMT Trans, 9 EMT, 3 TO I
 Thomas 8 EMT
 Trego 3 EMT

Region II

Grant 6 AEMT
 Gray 1 Paramedic
 Greeley 2 CE
 Haskell 1 AEMT Trans
 Hodgeman 2 EMT
 Kearny 1 AEMT, 8 EMT, 1 Paramedic
 Meade 9 AEMT, 27 EMT
 Morton 1 CE, 1 TO I, 1 Paramedic
 Scott 13 CE, 12 EMT Trans
 Stevens 22 EMT
 Wichita 7 AEMT

Region III

Barber 6 EMT
 Edwards 1 AEMT, 1 AEMT Trans, 3 EMT
 Kingman 7 EMT
 Marion 14 EMT
 Pawnee 8 AEMT Trans, 15 EMT, 1 I/C
 Rice 3 AEMT Trans

Region IV

Clay 1 AEMT, 1 AEMT Trans
 Cloud 4 AEMT Trans
 Jewel 4 AEMT Trans, 7 EMT
 Lincoln 4 EMT
 Mitchell 3 EMT, 1 Paramedic
 Osborne 4 AEMT, 1 EMT, 1 Paramedic
 Ottawa 1 CE, 14 EMT, 1 Paramedic, 1 TO I
 Pawnee 1 EMT
 Republic 3 AEMT Trans
 Smith 2 Paramedic

Region V

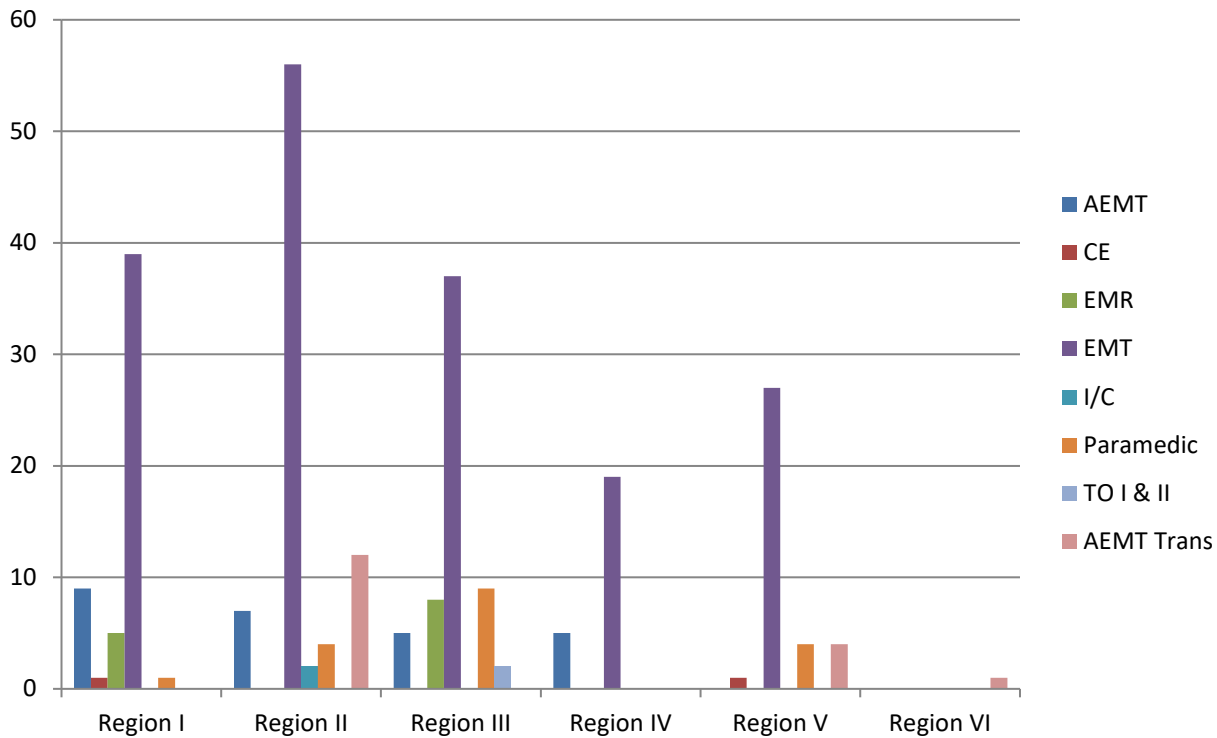
Brown 5 AEMT Trans, 21 EMT, 4 EMT Trans
 Chase 1 EMT
 Coffey 1 Paramedic
 Marshall 4 EMT, 1 Paramedic

Region VI

Wilson 1 AEMT Trans

FY2014 Distribution (Number of Students Per Region)

FY 2014 Distribution (Number of Students Per Region)



Region I

Cheyenne 2 EMT
 Decatur 5 EMR
 Gove 5 EMT
 Norton 1 EMT, 1 AEMT
 Phillips 8 EMT, 1 Paramedic, CE Hours
 Rawlins 1 AEMT
 Rooks 5 EMT, 4 EMT, 3 AEMT
 Rush 1 AEMT

Harvey 3 Paramedic
 Kingman 8 EMR, 1 Paramedic, 1 TO II
 Kiowa 1 EMT, 1 Paramedic
 McPherson 9 EMT
 Pawnee 11 EMT, 1 Paramedic
 Reno 9 EMT
 Stafford 7 EMT

Sheridan 1 AEMT, 1 EMT
 Sherman 10 EMT
 Thomas 6 EMT, 4 AEMT
 Trego 1 EMT, 1 AEMT

Region II

Finney 2 Paramedic
 Grant 18 EMT, 1 Paramedic
 Gray 2 AEMT
 Greeley 4 EMT
 Hamilton 6 EMT
 Haskell 6 EMT
 Hodgeman 2 AEMT, 9 EMT, 1 Paramedic
 Kearny 2 AEMT, 2 EMT
 Lane 1 AEMT
 Morton 11 EMT, 2 I/C
 Stevens 12 AEMT Trans

Region IV

Clay 1 EMT
 Cloud 6 EMT
 Ellsworth 2 AEMT
 Jewell 1 EMT
 Lincoln 2 EMT
 Osborne 2 AEMT; 2 EMT
 Ottawa 1 AEMT, 3 EMT
 Republic 1 EMT
 Smith 3 EMT

Region V

Brown 2 AEMT Trans, 3 Paramedic
 Chase CE Hours
 Marshall 2 EMT, 2 AEMT Trans
 Nemaha 16 EMT, 1 Paramedic
 Washington 9 EMT

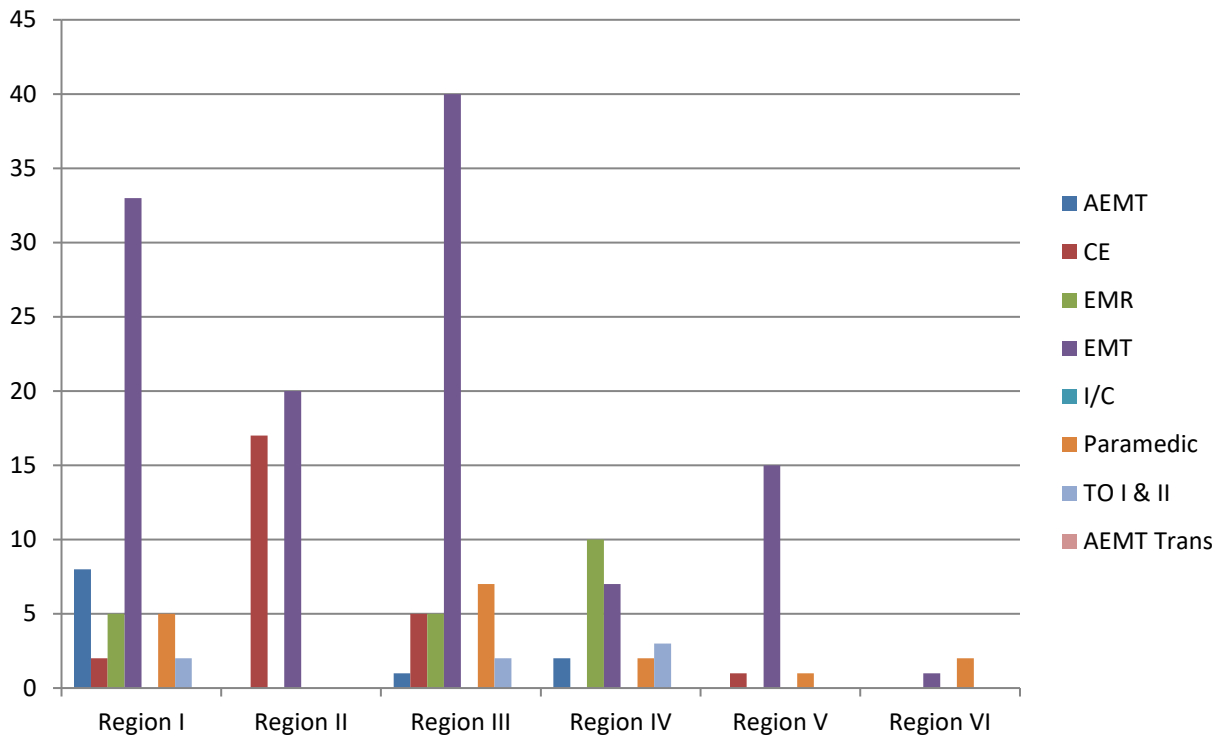
Region III

Barton TO I & II
 Edwards 1 Paramedic
 Harper 2 Paramedic, 5 AEMT

Region VI

Greenwood 1 AEMT Trans

FY 2015 Distribution (Number of Students Per Region)



Region I

Cheyenne 5 EMR
 Norton 2 AEMT, 3 EMT, 1 TO I
 Phillips 6 AEMT, 1 CE, 11 EMT, 1 Paramedic
 Rawlins 1 TO I
 Russell 1 EMT, 2 Paramedic
 Sheridan 4 EMT
 Sherman 1 CE, 9 EMT, 2 Paramedic
 Thomas 1 EMT
 Wallace 4 EMT

Kiowa 5 CE, 3 EMT
 Pawnee 1 AEMT, 3 EMT
 Stafford 9 EMT
 Sumner 1 Paramedic

Region IV

Cloud 10 EMR, 1 EMT
 Mitchell 1 Paramedic
 Ottawa 3 TO I
 Osborne 1 Paramedic
 Republic 6 EMT
 Smith 2 AEMT

Region II

Grant 14 CE
 Greeley 2 EMT
 Kearny 1 EMT
 Lane 4 EMT
 Morton 3 CE, 4 EMT
 Wichita 9 EMT

Region V

Brown 1 EMT
 Chase 1 CE, 1 EMT
 Doniphan 1 EMT
 Jackson 2 EMT
 Jefferson 2 EMT
 Nemaha 1 Paramedic
 Washington 8 EMT

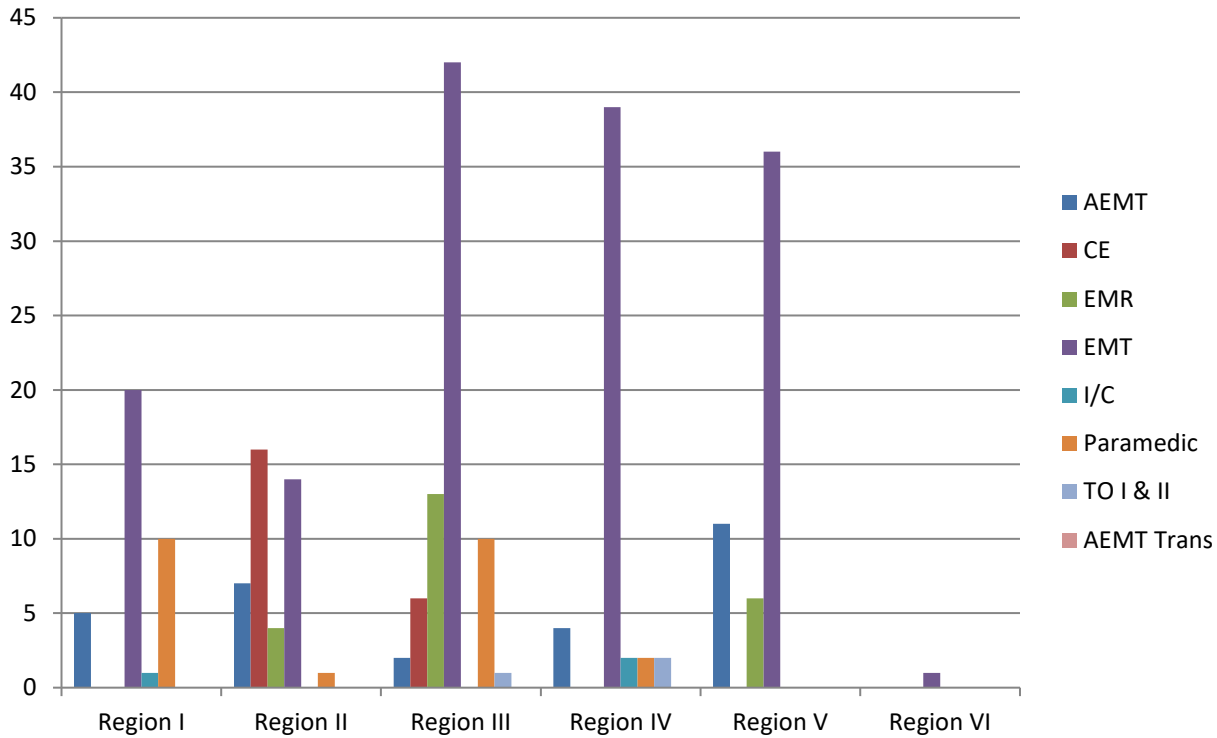
Region III

Barton 5 EMR, 4 EMT, 1 Medic & TO I
 Comanche 6 EMT, 1 TO II
 Cowley 3 Paramedic
 Edwards 9 EMT
 Harper 1 Paramedic
 Harvey 1 EMT, 1 Paramedic
 Kingman 5 EMT

Region VI

Chautauqua 1 Paramedic
 Montgomery 1 EMT
 Wilson 1 Paramedic

FY 2016 Distribution (Number of Students Per Region)



Region I

Ellis 1 IC, 2 Paramedic
 Logan 7 EMT
 Norton 1 Paramedic
 Phillips 5 Paramedic
 Rooks 11 EMT
 Rush 1 EMT
 Russell 1 EMT, 2 Paramedic
 Sherman 2 AEMT, 1 EMT
 Thomas 3 AEMT, 4 EMT
 Trego 2 EMT

Marion 6 EMR, 1 EMT, 1 Paramedic
 McPherson 8 EMT
 Pawnee 1 EMT
 Sumner 2 EMT, 2 Paramedic

Region II

Clark 1 EMT
 Finney 1 EMT
 Grant 1 Paramedic
 Hamilton 4 EMR, 2 EMT
 Kearney 9 EMT
 Lane 1 EMT
 Morton 16 CE
 Scott 7 AEMT

Region IV

Clay 4 AEMT, 5 EMT
 Cloud 5 EMT, 1 I/C, 2 TO I
 Jewell 1 Paramedic
 Mitchell 7 EMT, 1 I/C
 Osborne 1 EMT
 Ottawa 16 EMT
 Republic 5 EMT, 1 I/C, 2 TO I
 Smith 1 Paramedic

Region III

Anderson 2 EMT
 Barber 9 EMT, 1 Paramedic
 Barton 5 EMR, 4 EMT, 1 Paramedic, 1 TO I
 Cloud 2 EMT
 Comanche 2 EMR
 Cowley 1 EMT, 3 Paramedic
 Harper 1 AEMT
 Kingman 1 AEMT, 4 EMT, 2 Paramedic
 Kiowa 6 CE, 8 EMT

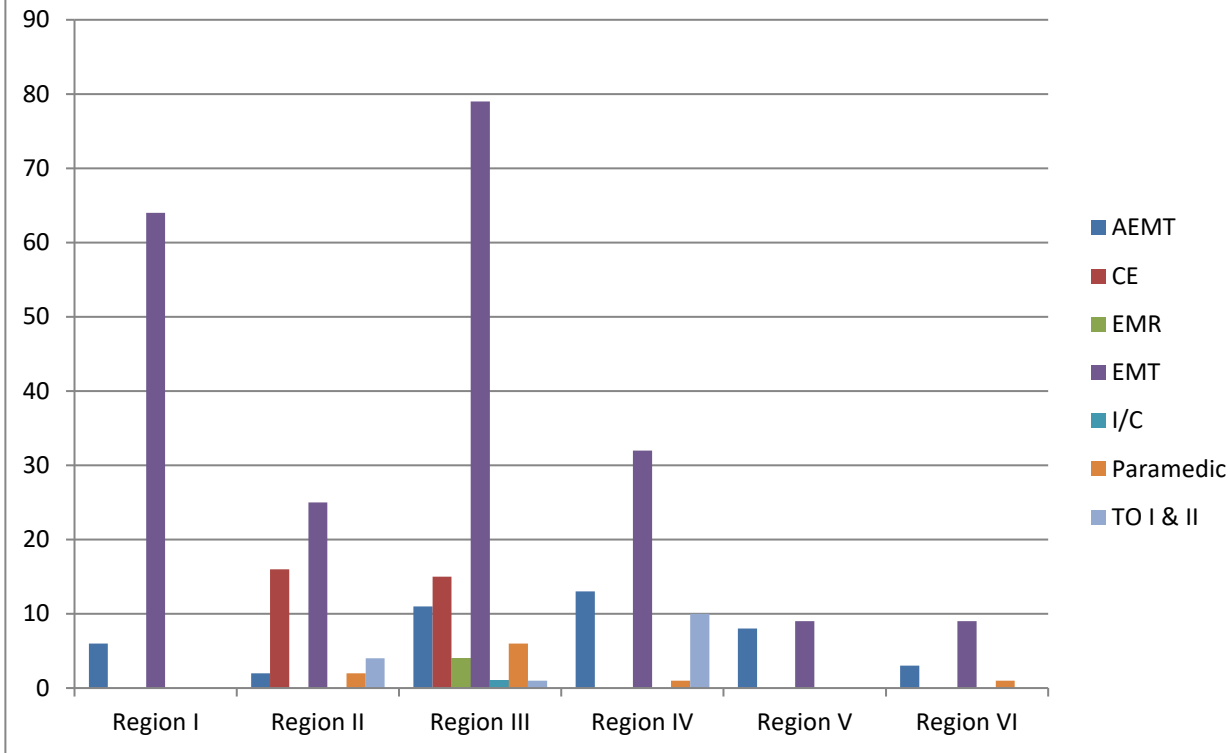
Region V

Atchison 1 AEMT
 Brown 6 EMT
 Chase 1 EMT
 Jackson 2 AEMT
 Jefferson 6 EMT
 Marshall 6 EMR, 11 EMT
 Morris 6 EMT
 Nemaha 3 AEMT, 5 EMT
 Osage 5 AEMT
 Washington 1 EMT

Region VI

Chautauqua 1 EMT

FY 2017 Distribution (Number of Students Per Region)



Region I

Ness	4 AEMT	Kiowa	4 EMT, 15 CE
Norton	9 EMT	Marion	1 Paramedic, 1 TO I
Phillips	11 EMT	McPherson	5 AEMT, 9 EMT
Rawlins	12 EMT	Pawnee	4 AEMT, 1 EMT
Rooks	1 AEMT, 16 EMT	Rice	1 AEMT
Rush	1 AEMT	Stafford	7 EMT
Russell	4 EMT	Sumner	4 EMR, 3 EMT, 3 Paramedic
Sheridan	5 EMT		
Sherman	5 EMT		
Trego	1 EMT		
Wallace	1 EMT		

Region II

Finney	2 EMT
Grant	8 EMT
Gray	1 AEMT, 2 TO I, 2 TO II
Greeley	5 EMT
Hodgeman	1 AEMT
Lane	1 EMT
Meade	2 Paramedic
Morton	16 CE
Scott	1 EMT
Stevens	8 EMT

Region III

Barber	1 EMT
Barton	15 EMT
Comanche	5 EMT, 1 I/C
Edwards	1 AEMT, 4 EMT
Harper	3 EMT
Harvey	16 EMT, 2 Paramedic
Kingman	11 EMT

Region IV

Clay	1 AEMT, 5 EMT
Cloud	1 AEMT, 8 EMT, 4 TO I, 6 TO II
Ellsworth	2 AEMT, 1 EMT, 1 Paramedic
Jewell	2 AEMT, 1 EMT, 1 Paramedic
Mitchell	1 AEMT, 6 EMT
Osborne	2 EMT
Ottawa	1 AEMT
Republic	5 AEMT, 8 EMT
Smith	1 EMT

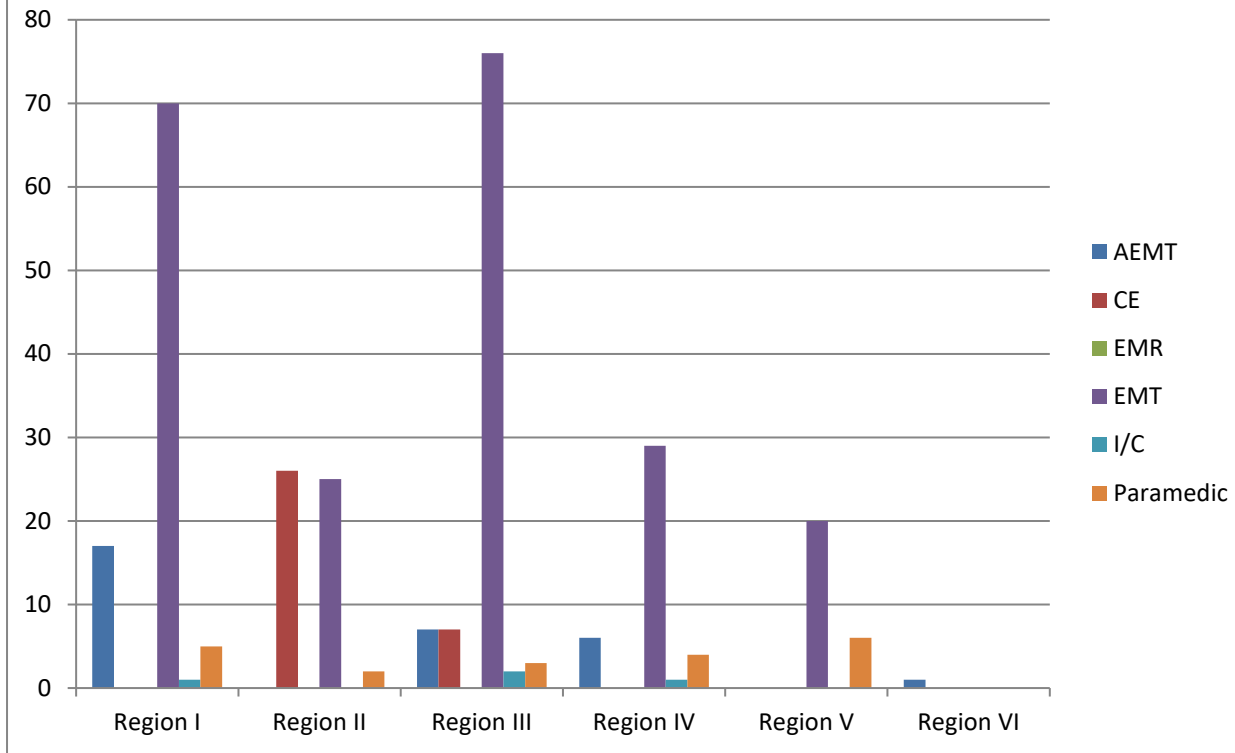
Region V

Anderson	3 AEMT
Atchison	2 AEMT
Jackson	1 AEMT
Jefferson	2 AEMT
Marshall	7 EMT
Washington	2 EMT

Region VI

Chautauqua	1 AEMT, 1 Paramedic
Greenwood	9 EMT
Montgomery	1 AEMT
Woodson	1 AEMT

FY 2018 Distribution (Number of Students Per Region)



Region I

Cheyenne	5 EMT
Gove	4 EMT
Graham	9 EMT
Logan	11 EMT
Norton	3 AEMT, 1 EMT
Phillips	5 EMT
Rawlins	3 EMT
Rooks	2 EMT
Rush	1 EMT
Russell	2 AEMT, 1 Paramedic
Sheridan	4 AEMT
Sherman	2 AEMT, 1 EMT, 4 Paramedic
Thomas	5 AEMT, 7 EMT, 1 I/C
Trego	1 AEMT, 11 EMT
Wallace	10 EMT

Kiowa	7 CE, 2 EMT
Marion	9 EMT, 2 I/C
McPherson	3 EMT
Pawnee	15 EMT
Rice	1 AEMT
Sedgwick	3 EMT
Stafford	5 EMT
Sumner	1 AEMT, 9 EMT, 1 Paramedic

Region IV

Clay	1 EMT, 1 Paramedic
Cloud	5 EMT
Ellsworth	1 Paramedic
Lincoln	4 EMT
Mitchell	3 AEMT
Osborne	2 AEMT
Ottawa	1 AEMT, 15 EMT, 2
Republic	1 I/C
Smith	4 EMT

Region V

Brown	2 EMT
Doniphan	1 EMT
Jackson	1 EMT, 2 Paramedic
Jefferson	1 EMT, 1 Paramedic
Marshall	3 EMT
Morris	5 EMT
Nemaha	4 EMT
Osage	2 Paramedic
Pottawatomie	1 Paramedic
Washington	3 EMT

Region II

Finney	1 Paramedic
Grant	26 CE, 6 EMT
Haskell	12 EMT
Kearny	1 EMT
Lane	1 EMT
Meade	1 Paramedic
Morton	2 EMT
Wichita	3 EMT

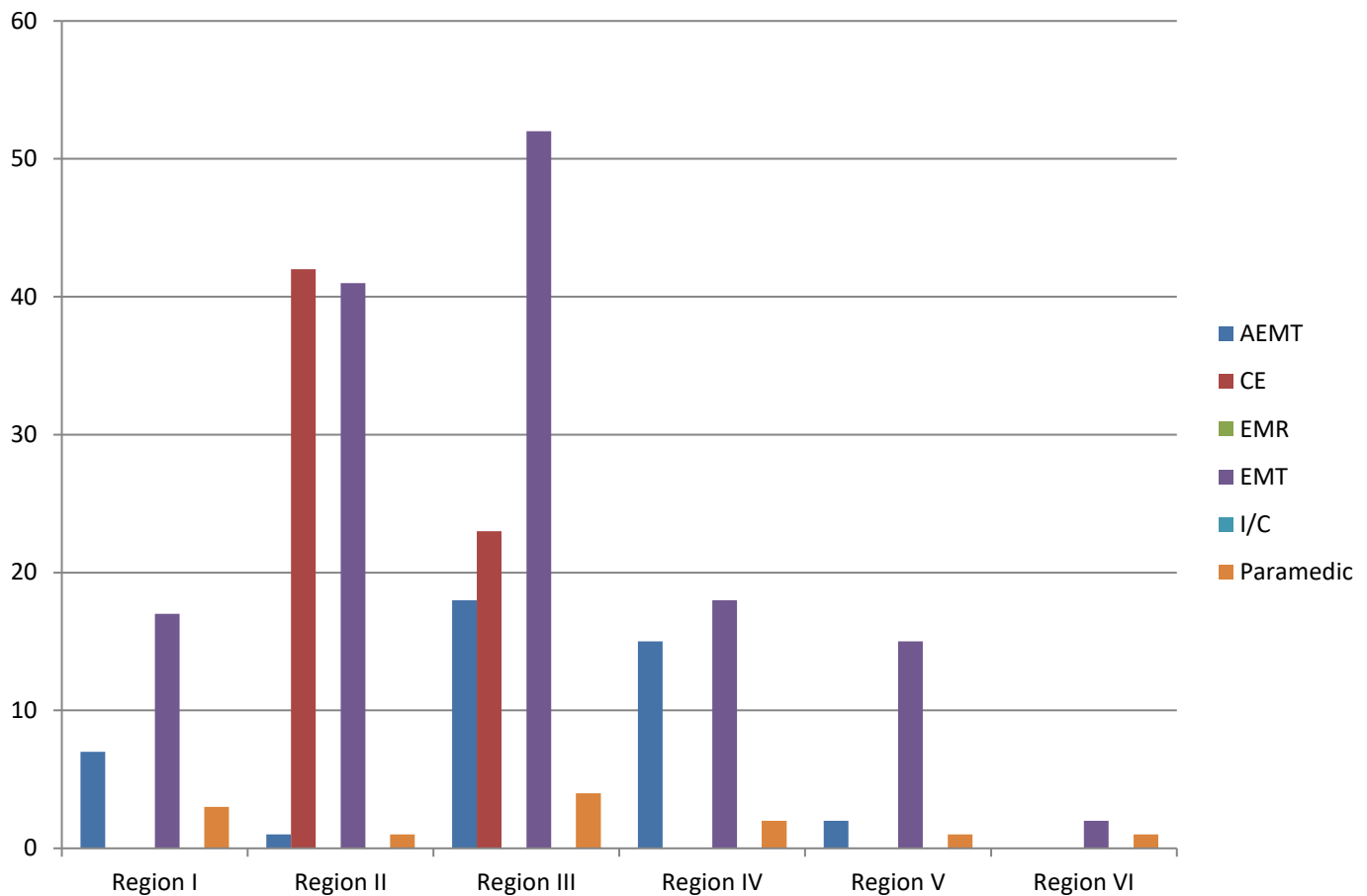
Region III

Barber	12 EMT
Barton	5 EMT, 1 Paramedic
Comanche	1 AEMT, 1 EMT
Cowley	1 Paramedic
Edwards	2 AEMT, 8 EMT
Harvey	3 EMT
Kingman	2 AEMT, 1 EMT

Region VI

Greenwood	1 AEMT
-----------	--------

FY 2019 Distribution (Number of Students Per Region)



Region I

Cheyenne 11 EMT
 Norton 2 EMT; 1 Paramedic
 Phillips 5 AEMT
 Rawlins 2 AEMT; 2 EMT
 Rooks 1 Paramedic
 Sherman 2 EMT; 1 Paramedic

Marion 3 EMT
 McPherson 6 EMT
 Pratt 1 AEMT
 Pawnee 1 EMT; 1 AEMT; 1 Paramedic
 Reno 5 EMT
 Sedgwick 6 EMT
 Stafford 1 AEMT
 Sumner 4 EMT

Region II

Finney 1 EMT; 1 Paramedic
 Grant 3 EMT; 17 CE
 Gray 5 EMT
 Greeley 3 EMT
 Hamilton 2 EMT
 Haskell 1 AEMT
 Hodgeman 8 EMT
 Kearny 7 EMT
 Morton 9 EMT; 18 CE
 Stanton 2 EMT; 7 CE
 Stevens 1 EMT

Region IV

Clay 6 EMT; 2 AEMT
 Cloud 7 EMT; 1 AEMT
 Ellsworth 1 AEMT
 Mitchell 2 AEMT; 1 Paramedic
 Osborne 3 AEMT
 Ottawa 6 AEMT
 Republic 5 EMT
 Smith 1 Paramedic

Region III

Barber 8 EMT; 3 AEMT
 Barton 9 AEMT
 Clay 6 EMT
 Comanche 2 EMT
 Cowley 1 Paramedic
 Edwards 1 AEMT
 Harper 2 EMT; 2 AEMT
 Harvey 1 Paramedic
 Kingman 9 EMT; 1 Paramedic
 Kiowa 23 CE

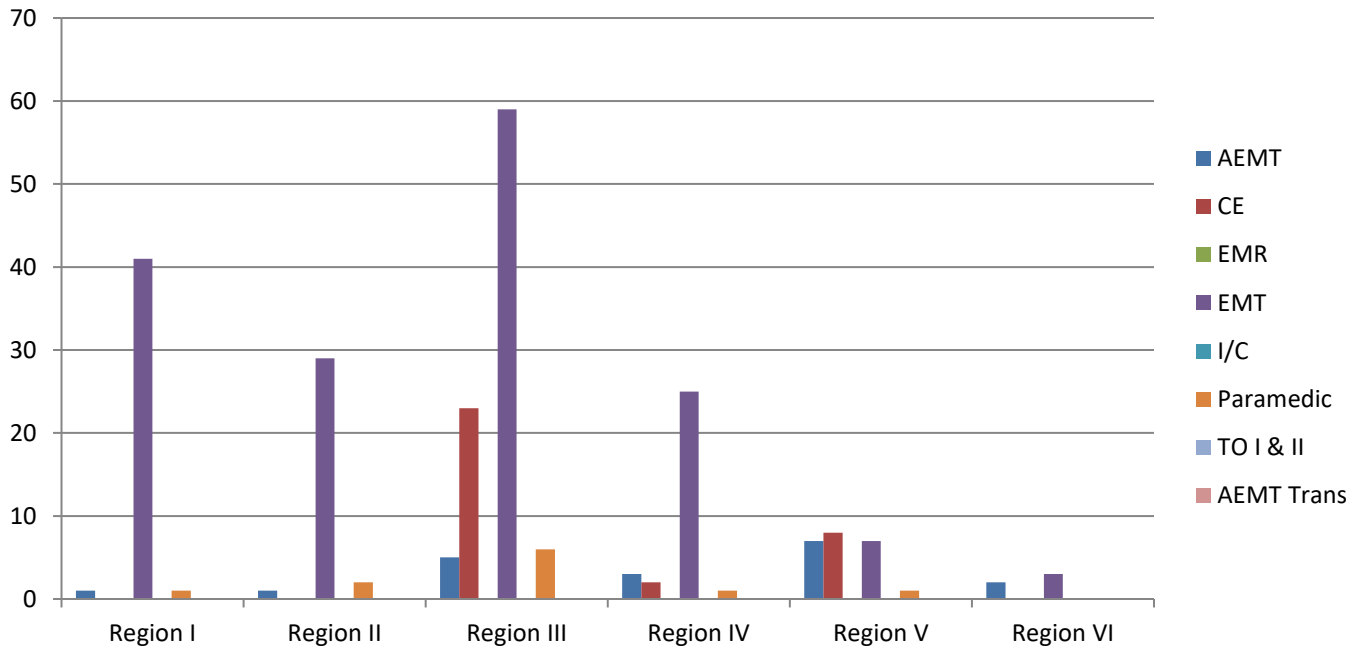
Region V

Anderson 1 EMT; 2 AEMT
 Jefferson Low Income-App only
 Marshall 12 EMT
 Pottawatomie 1 Paramedic
 Washington 2 EMT

Region VI

Elk 1 EMT
 Greenwood 1 Paramedic
 Montgomery 1 EMT

FY 2020 Distribution (Number of Students Per Region)



Region I

Cheyenne	1 EMT	Sumner	2 Paramedic
Gove	1 EMT	Kiowa	23 CE; 1 Paramedic
Phillips	11 EMT	Marion	1 Paramedic
Rooks	1 EMT	McPherson	4 EMT; 1 Paramedic
Russell	1 AEMT; 1 Paramedic	Pawnee	4 EMT
Sheridan	2 EMT	Rice	1 AEMT
Sherman	6 EMT	Sedgwick	7 EMT
Thomas	8 EMT	Stafford	8 EMT
Trego	11 EMT	Sumner	2 Paramedic

Region II

Finney	1 EMT
Gray	1 EMT
Greeley	2 EMT
Hamilton	4 EMT
Hodgeman	1 AEMT; 6 EMT; 1 Paramedic
Meade	1 Paramedic
Scott	10 EMT
Wichita	5 EMT

Region IV

Clay	5 EMT; 2 I/C
Cloud	7 EMT
Dickinson	1 AEMT
Ellsworth	2 AEMT; 2 EMT; 1 Paramedic
Jewell	3 EMT
Lincoln	3 EMT
Mitchell	1 EMT
Republic	3 EMT
Smith	1 EMT

Region III

Barber	16 EMT
Barton	3 EMT; 1 Paramedic
Comanche	6 EMT
Edwards	1 EMT
Harper	1 EMT
Harvey	4 AEMT; 3 EMT
Kingman	6 EMT
Kiowa	23 CE; 1 Paramedic
Marion	1 Paramedic
McPherson	4 EMT; 1 Paramedic
Pawnee	4 EMT
Rice	1 AEMT
Sedgwick	7 EMT
Stafford	8 EMT

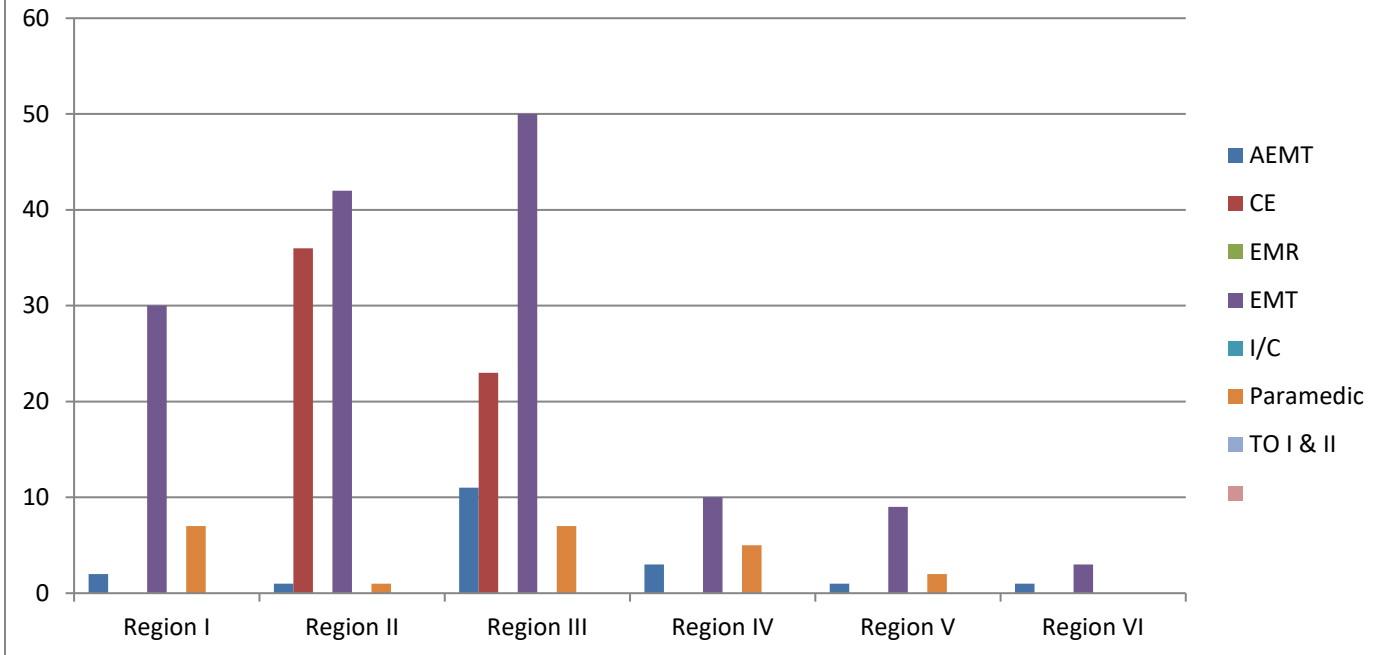
Region V

Coffey	8 CE
Jackson	1 AEMT; 1 Paramedic
Jefferson	2 AEMT
Marshall	3 AEMT; 3 EMT
Nemaha	1 AEMT
Washington	4 EMT

Region VI

Chautauqua	2 EMT
Elk	1 EMT
Greenwood	2 AEMT

FY 2021 Distribution (Number of Students Per Region)



Region I

Cheyenne 3 EMT
 Gove 3 EMT
 Ness 2 EMT
 Phillips 3 Paramedic
 Rawlins 3 EMT
 Rooks 6 EMT
 Russell 1 AEMT
 Sherman 1 AEMT; 12 EMT; 1 Paramedic
 Thomas 1 EMT; 3 Paramedic

Harper 1 AEMT; 2 Paramedic
 Harvey 1 Paramedic
 Kingman 11 EMT
 Kiowa 2 AEMT, 2 EMT, 23 CE
 McPherson 2 AEMT, 15 EMT, 1 Paramedic
 Pawnee 9 EMT; 2 Paramedic
 Reno 2 EMT
 Rice 1 EMT
 Sedgwick 1 AEMT
 Stafford 2 AEMT
 Sumner 3 AEMT; 1 EMT

Region II

Finney 1 AEMT; 1 Paramedic
 Grant 9 EMT; 14 CE
 Greeley 4 EMT
 Haskell 2 EMT
 Kearny 1 EMT
 Lane 3 EMT
 Meade 13 EMT
 Morton 6 EMT; 16 CE
 Stanton 6 CE
 Stevens 4 EMT

Region IV

Clay 3 EMT; 1 Paramedic
 Cloud 6 EMT; 2 Paramedic
 Dickinson 1 AEMT
 Ellsworth 1 AEMT, 1 EMT, 2 Paramedic
 Lincoln 1 AEMT

Region V

Atchison 2 Paramedic
 Coffey 1 AEMT
 Jackson 1 EMT
 Morris 7 EMT
 Nemaha 1 EMT

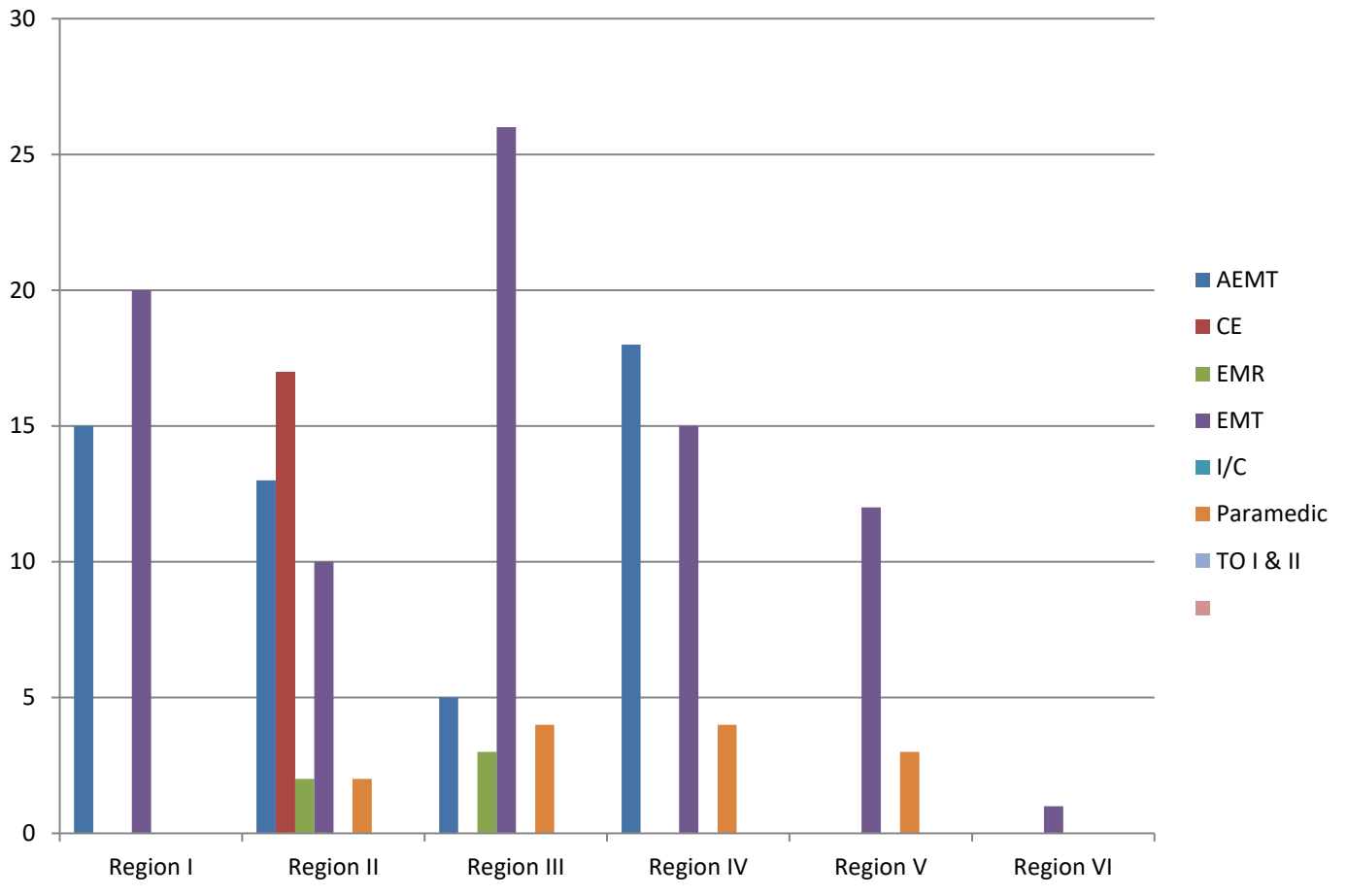
Region III

Barber 5 EMT
 Barton 1 Paramedic
 Comanche 2 EMT
 Cowley 1 EMT
 Edwards 1 EMT

Region VI

Woodson 1 AEMT; 3 EMT

FY 2022 Distribution (Number of Students Per Region)



Region I

Cheyenne 6 AEMT
 Decatur 2 AEMT; 1 EMT
 Ellis 1 EMT
 Gove 3 AEMT; 2 EMT
 Graham 2 EMT
 Ness 6 EMT
 Phillips 7 EMT
 Sheridan 1 EMT
 Sherman 2 AEMT
 Wallace 2 AEMT

Kiowa 1 AEMT
 McPherson 3 AEMT; 1 EMT; 4 Paramedic
 Reno 2 EMR
 Sumner 3 EMT

Region IV

Clay 1 AEMT; 2 EMT
 Cloud 7 AEMT; 9 EMT; 1 Paramedic
 Ellsworth 2 AEMT; 1 EMT
 Jewell 1 AEMT
 Mitchell 1 Paramedic
 Osborne 2 EMT
 Ottawa 1 EMT
 Republic 5 AEMT; 1 Paramedic
 Scott 1 Paramedic
 Smith 2 AEMT

Region II

Finney 1 AEMT; 2 Paramedic
 Grant 7 EMT
 Gray 2 AEMT; 2 EMT
 Haskell 4 AEMT
 Hodgeman 2 EMR
 Lane 1 EMT
 Morton 3 AEMT; 10 CE
 Stanton 7 CE
 Stevens 3 AEMT

Region V

Chase 2 EMT
 Jackson 1 Paramedic
 Jefferson 2 Paramedic
 Marshall 1 EMT
 Morris 1 EMT
 Nemaha 5 EMT
 Washington 3 EMT

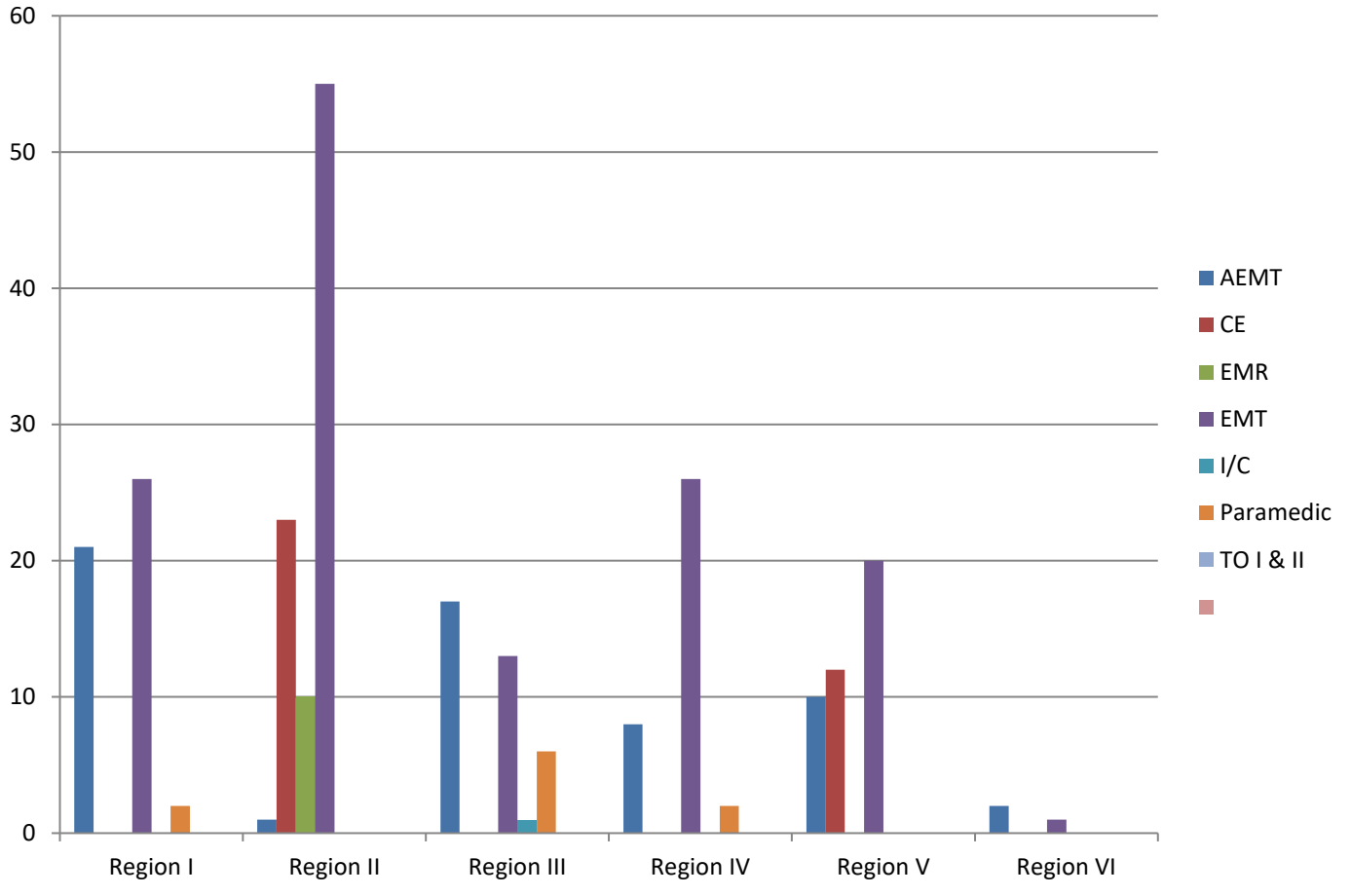
Region III

Barber 4 EMT
 Barton 12 EMT
 Cowley 1 AEMT
 Edwards 1 AEMT
 Kingman 1 EMR; 5 EMT

Region VI

Chautauqua 1 EMT

FY 2023 Distribution (Number of Students Per Region)



Region I

Ellis 1 AEMT; 1 EMT; 2 Paramedic
 Gove 2 EMT
 Graham 6 EMT
 Logan 9 AEMT
 Ness 1 EMT
 Norton 3 AEMT
 Phillips 5 AEMT
 Rush 8 EMT
 Russell 1 AEMT
 Sheridan 1 AEMT; 1 EMT
 Sherman 1 AEMT
 Thomas 6 EMT
 Wallace 1 EMT

Kingman 1 AEMT; 2 EMT
 Pawnee 1 AEMT
 Reno 1 Paramedic
 Sedgwick 1 EMT
 Stafford 2 AEMT; 3 EMT; 1 Paramedic
 Sumner 1 AEMT; 2 Paramedic

Region IV

Clay 4 EMT
 Cloud 13 EMT
 Ellsworth 3 AEMT; 3 EMT; 1 Paramedic
 Jewell 1 AEMT
 Mitchell 1 AEMT
 Osborne 1 AEMT
 Ottawa 2 AEMT; 5 EMT
 Republic 1 EMT; 1 Paramedic

Region II

Clark 13 EMT
 Grant 12 CE
 Greeley 8 EMT
 Haskell 1 EMT
 Lane 2 EMT
 Meade 1 AEMT
 Morton 5 CE; 7 EMR
 Scott 10 EMT
 Seward 3 EMT
 Stanton 6 CE; 3 EMR
 Stevens 13 EMT
 Wichita 5 EMT

Region V

Anderson 1 AEMT
 Atchison 2 AEMT
 Chase 1 EMT
 Coffey 12 CE
 Doniphan 4 EMT
 Jackson 4 AEMT; 3 EMT
 Marshall 11 EMT
 Nemaha 2 AEMT
 Osage 1 AEMT
 Washington 1 EMT

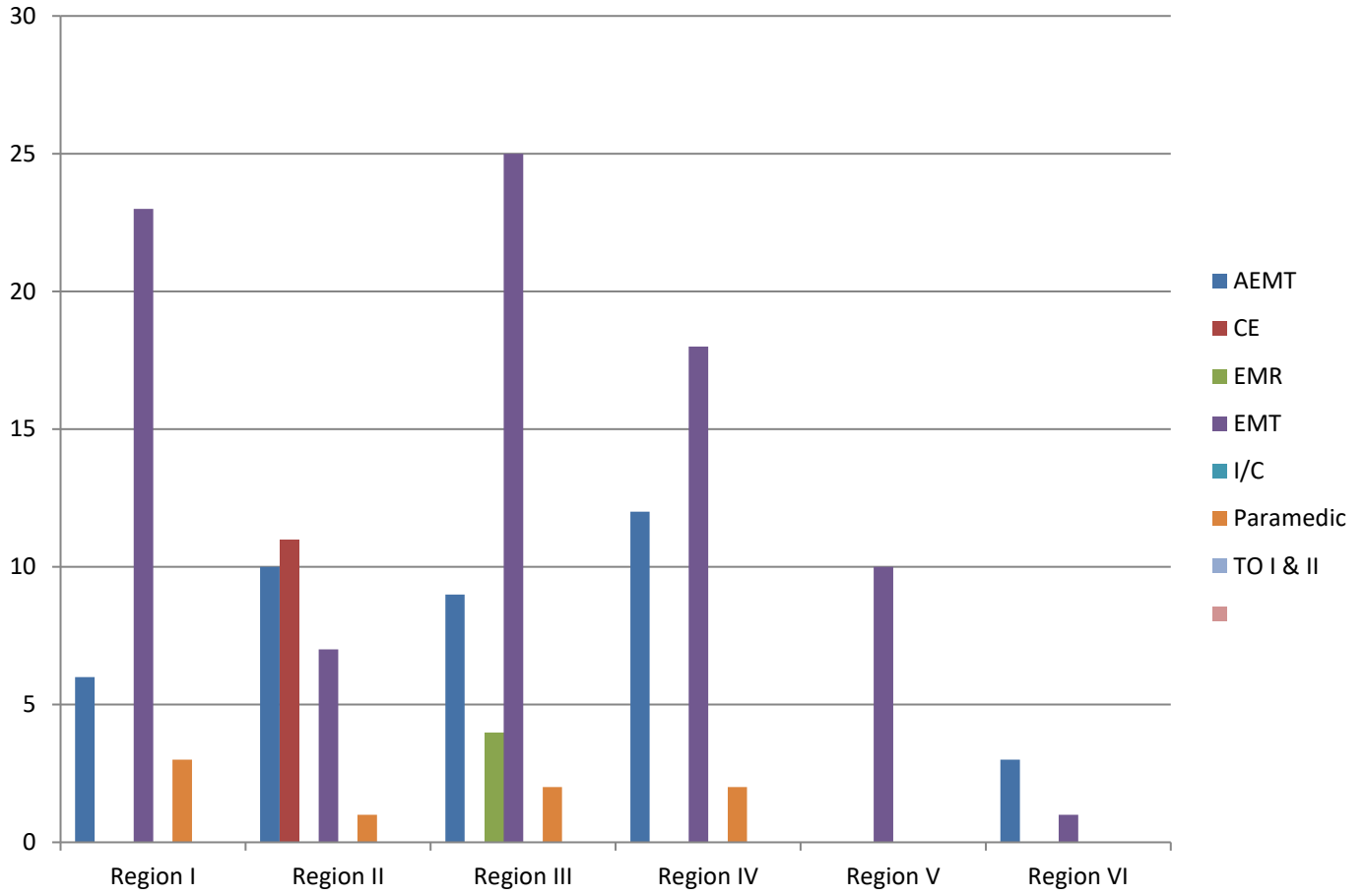
Region III

Barber 8 AEMT; 1 EMT; 1 Paramedic
 Cowley 3 AEMT; 1 EMT; 1 I/C
 Edwards 1 AEMT
 Harvey 5 EMT; 1 Paramedic

Region VI

Elk 1 EMT
 Montgomery 2 AEMT

FY 2024 Distribution (Number of Students Per Region)



Region I

Ellis 5 EMT
 Norton 3 EMT; 2 Paramedic
 Phillips 6 EMT
 Rooks 7 EMT
 Rush 2 AEMT
 Russell 4 AEMT; 1 Paramedic
 Sherman 2 EMT

Region II

Grant 6 AEMT
 Hodgeman 3 EMT
 Morton 4 EMT; 11 CE
 Scott 4 AEMT
 Seward 1 Paramedic

Region III

Barber 7 EMT
 Barton 1 AEMT; 1 EMT
 Cowley 1 AEMT; 2 EMT
 Edwards 2 AEMT
 Harvey 1 AEMT; 1 EMT
 Kingman 1 AEMT; 2 EMT; 4 EMR
 Kiowa 2 AEMT; 7 EMT
 McPherson 2 EMT; 2 Paramedic
 Pawnee 1 EMT
 Sedgwick 1 AEMT; 2 EMT

Region IV

Cloud 7 AEMT; 3 EMT; 1 Paramedic
 Dickinson 1 AEMT
 Ellsworth 2 AEMT
 Lincoln 4 EMT
 Mitchell 1 EMT
 Ottawa 2 AEMT; 10 EMT; 1 Paramedic

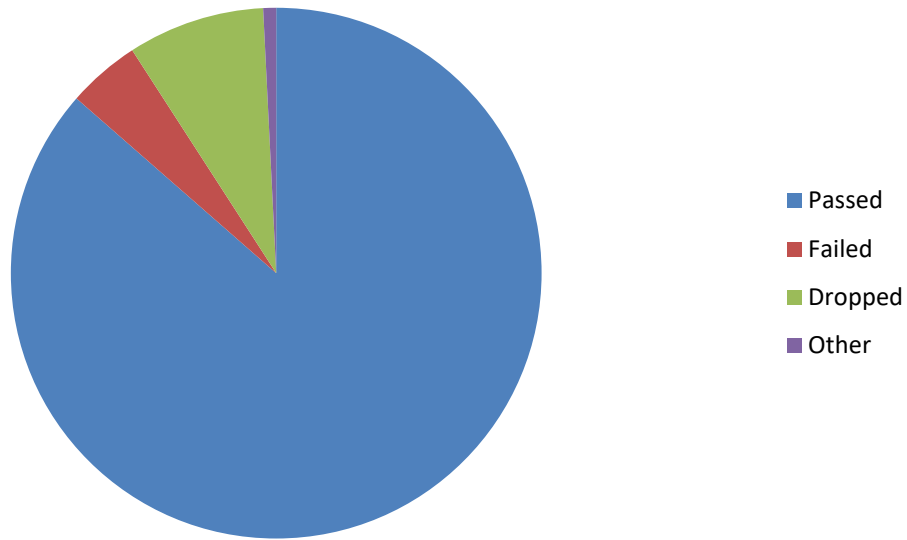
Region V

Doniphan 1 EMT
 Jackson 6 EMT
 Marshall 3 EMT

Region VI

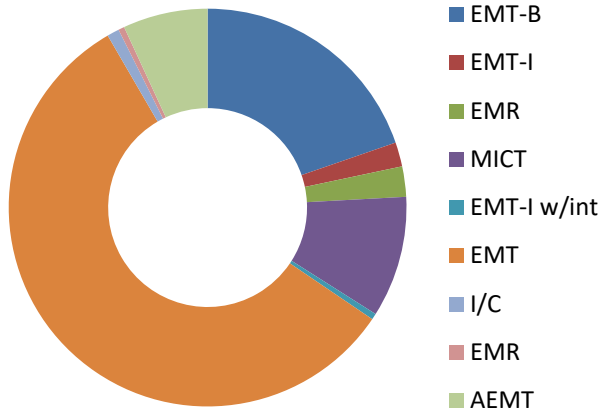
Chautauqua 1 AEMT; 1 EMT
 Woodson 2 AEMT

Course Status



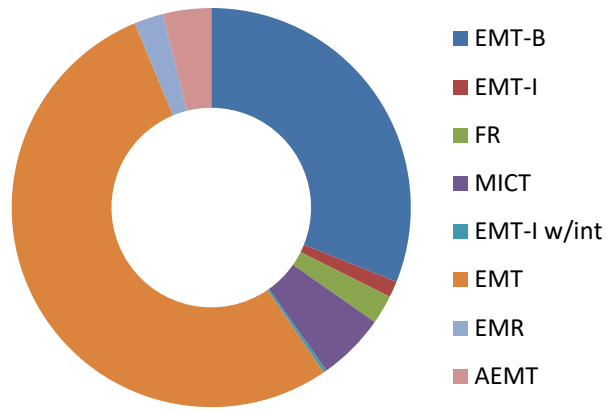
From CY2004 to through CY2023, 4,577 students have been granted EIG monies for courses. Of that amount, 3,958 have passed their course, 203 have failed their course, 382 have dropped their course, and 36 are listed as other. These 32 are students who did not receive a pass/fail/drop status, but rather paid back the grant. One is still paying back their grant. Four students are still in their course.

Failed Course



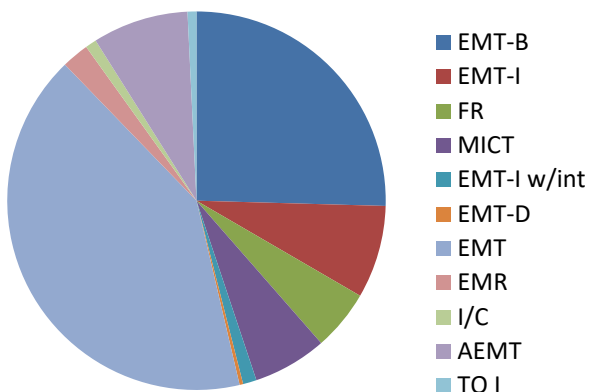
Of the 203 students who failed:
 40 of them were taking an EMT-B course;
 4 were taking an EMT-I course;
 5 were taking an FR course;
 20 were taking a Paramedic course;
 1 was taking an EMT-I w/intubation course;
 116 were taking an EMT course;
 2 were taking an I/C course;
 1 was taking an EMR course;
 14 were taking an AEMT course.

Dropped Course



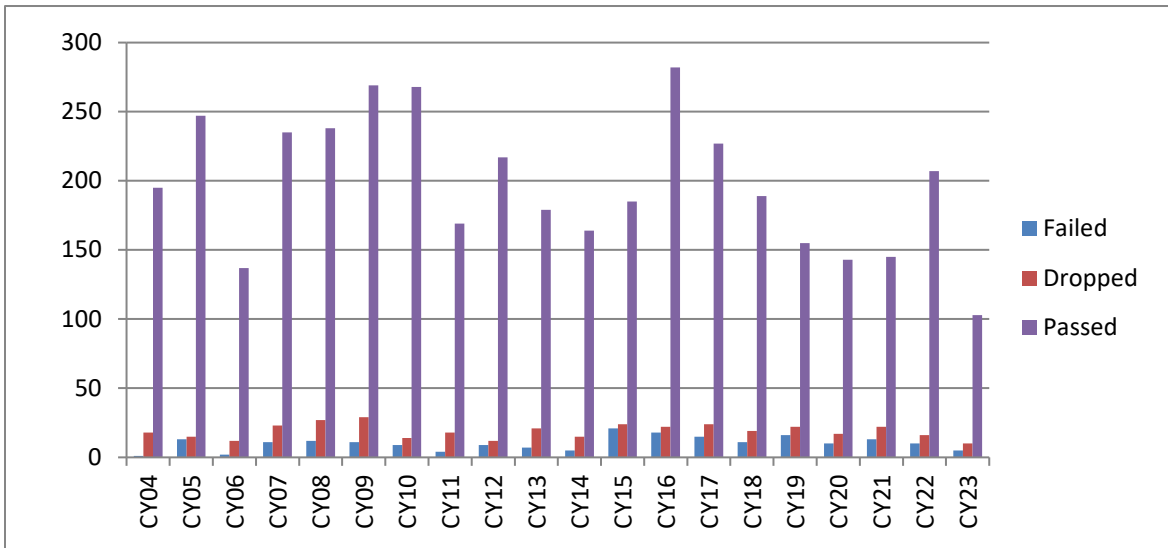
Of the 382 students who dropped:
 119 of them were taking an EMT-B course;
 5 were taking an EMT-I course;
 9 were taking a FR course;
 21 were taking a Paramedic course;
 1 was taking an EMT-I w/intubation course;
 204 were taking an EMT course;
 9 were taking an EMR course;
 15 were taking an AEMT course.

Passed Course



Of the 3,958 students who passed:
 1,007 were taking an EMT-B course;
 314 were taking an EMT-I course;
 205 were taking a FR course;
 250 were taking a Paramedic course;
 46 were taking an EMT-I w/intubation course;
 12 were taking an EMT-D course;
 1,640 were taking an EMT course;
 92 were taking an EMR course;
 38 were taking an I/C course.
 324 were taking an AEMT course;
 30 were taking a TO course.

Failed/Dropped/Passed Course Status by Calendar Year



	Fail	Drop	Pass	Other	Total
CY04	1	18	195	0	214
CY05	13	15	247	11	286
CY06	2	12	137	0	151
CY07	11	23	235	5	274
CY08	12	27	238	7	284
CY09	11	29	269	0	309
CY10	9	14	268	2	292
CY11	4	18	169	0	191
CY12	9	13	218	0	240
CY13	7	21	179	1	208
CY14	5	15	164	4	188
CY15	21	24	186	0	231
CY16	18	22	282	0	322
CY17	15	24	228	0	267
CY18	11	19	189	1	220
CY19	16	22	155	0	193
CY20	10	17	143	0	170
CY21	13	22	145	0	180
CY22	10	17	208	1	235
CY23	5	10	103	4	122

Of the 4,577 course grants awarded, 3,958 students passed their course.